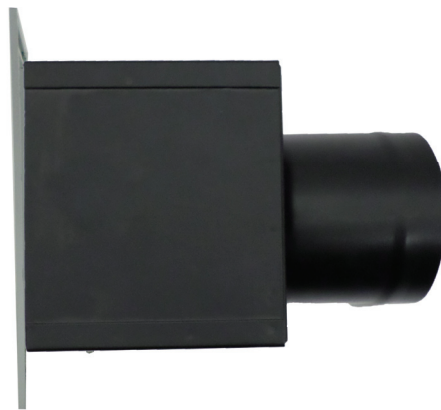


# MANROSE DESIGNER WEATHERPROOF LOUVRE GRILLES

## ALUMINIUM

Face Size (W x H) mm	Finish	Cut Out Size (W x H) mm	Order Code
168 x 280	Quality Anodised	110 x 225	DCT3709
215 x 280	Quality Anodised	165 x 230	DCT4069
250 x 250	Quality Anodised	200 x 200	DCT4070

- Designed for both intake and return air applications.
- Wide blade spacings enable improved airflow with reduced pressure drops and noise levels.
- Easy-fit plenum included.
- Bird mesh included.



Plenum for Weatherproof Louvre Grilles



168 x 280mm Weatherproof Louvre Grille



215 x 280mm Weatherproof Louvre Grille



250 x 250mm Weatherproof Louvre Grille

## DIMENSION INFORMATION

Model	A Face Size H x W (mm)	B Cut Out Size H x W (mm)	Spigot Shape	C Spigot Length (mm)	D Spigot Dia (mm)	E Overall Depth (mm)
DCT3709	168 x 280	110 x 225	Oval	70	150*	180
DCT4069	215 x 280	165 x 230	Circular	70	150	180
DCT4070	250 x 250	200 x 200	Circular	70	150	180

\* DCT3709 spigot is oval - 180mm wide to fit 150mm duct.

