

LUMINOUS TWO

APP USER GUIDE FOR ANDROID



Disclaimer

Please note that the images and instructions contained in this guide are based on app version 2.2.3. While the information is accurate to this app version, future app updates may result in changes to the app user interface and/or app features. In the case of any major changes, a corresponding updated user guide and/or technical bulletin will be made available on the Simx website (www.simx.co.nz). Furthermore, being a third party app, some functions (i.e. Bright Calibrate) are not applicable to the Luminous 2 hardware. All applicable functions are as outlined in this user guide.

CONTENTS

1. Setting the Bluetooth Network PIN/Password
2. Searching and Adding Luminaires
 - A. Enter Default Network PIN/Password
 - B. Manual Reset of Luminaires
3. Basic Luminaire Control
 - A. Individual Control of Luminaires
 - B. Group Control of Luminaires
4. Room and Luminaire Setup
 - A. To Add Rooms
 - B. To Rename Luminaires
 - C. To Rename or Delete Rooms
5. Assigning Devices to Rooms
 - A. Selecting Individual Luminaires to Add to a Location
 - B. Selecting a Group of Luminaires to Add to a Location
6. Creating Scenes
7. Dimming Delay

PRODUCT FEATURES

- *Use your mobile device to control luminaires via Bluetooth*
- *Individual and group switching control of luminaires*
- *Individual and group dimming of luminaires between 1-100% light output*
- *Individual and group colour changing of luminaires between Warm White (2700k) and Daylight (6500k)*
- *Assigning of luminaires to named room locations*
- *Separate scene setting of groups*
- *Add up to 1056 luminaires to a single group and 1056 scenes per group*
- *Light level and colour level returns to last setting when luminaires turned on again*
- *Password protected Bluetooth network*
- *Multiple device access of luminaires*

To access the dimming and colour-changing functions of this product requires Bluetooth access via an Android or iOS device.

This user guide is based on the Android operating system. An iOS user guide is available separately.

Android Phone App

App Link: <https://play.google.com/store/apps/details?id=com.generic.home>

Android App should install on Android 4.4.4 and above.

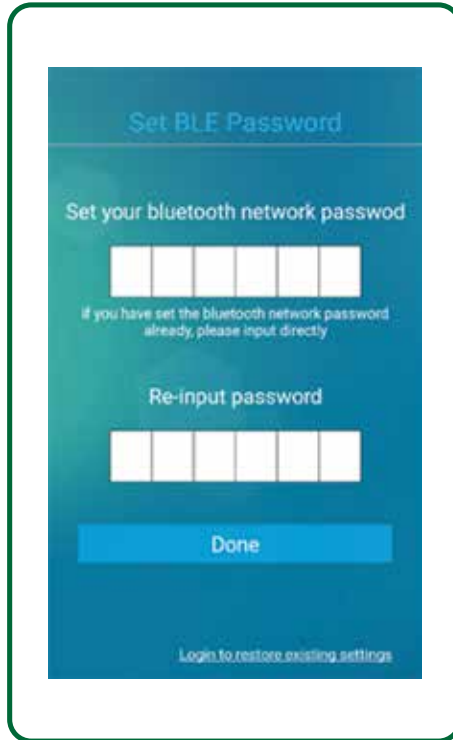
Note: This app will run in the background.


USING THE APP

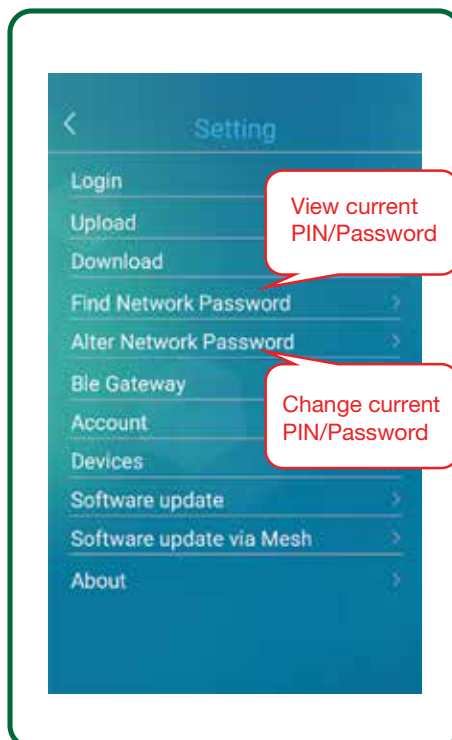
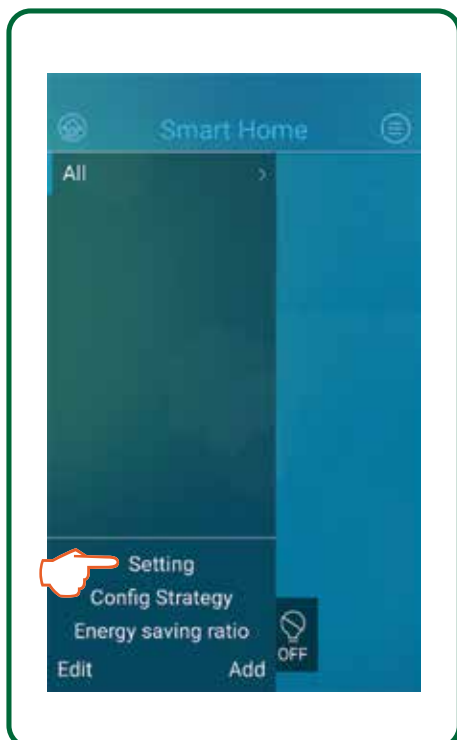
1. Setting the Bluetooth Network PIN/Password

All luminaires assigned on your App are locked to your device by way of the Network PIN/Password you assign at the start. For multiple devices to operate the same luminaires, the mobile devices must have the same Network PIN/Password.

When prompted, please set your Bluetooth network PIN. This is required the first time you run the App.




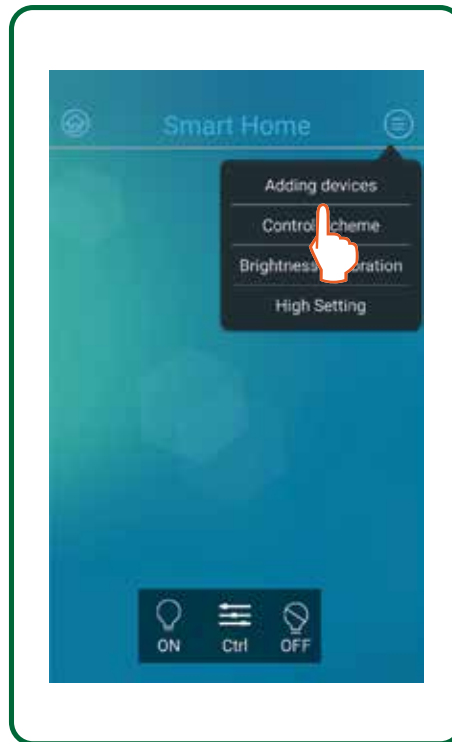
To view or change the Network PIN/Password, go to the App home screen, tap on the home icon (top left ) , select **Setting**, then **Find Network Password** or **Alter Network Password** to view or change respectively.



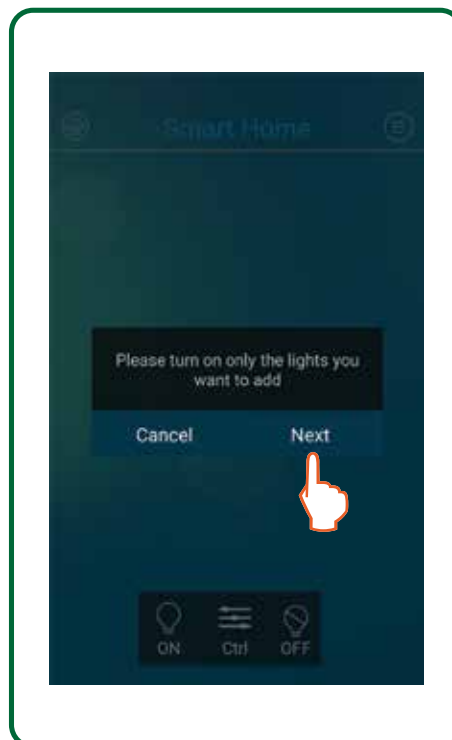
Only share this PIN/password with others who you wish to have access to the luminaires. Foreign access or control of these luminaires is not possible, so your neighbour cannot accidentally change your settings and you cannot accidentally change theirs.

2. Searching and Adding Luminaires

Turn on Bluetooth on your mobile device, from the app home screen click on the menu icon (top right ) , and select **Adding devices**.

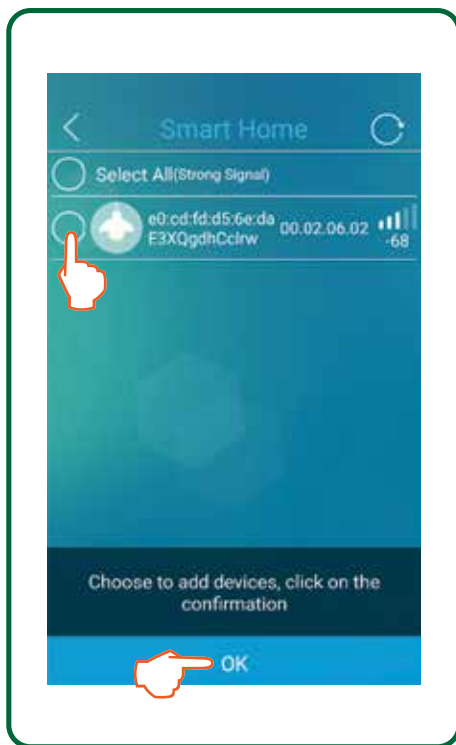


Turn on the luminaires you want to add, tap on **Next**, and your mobile device will automatically search and list the available luminaires.



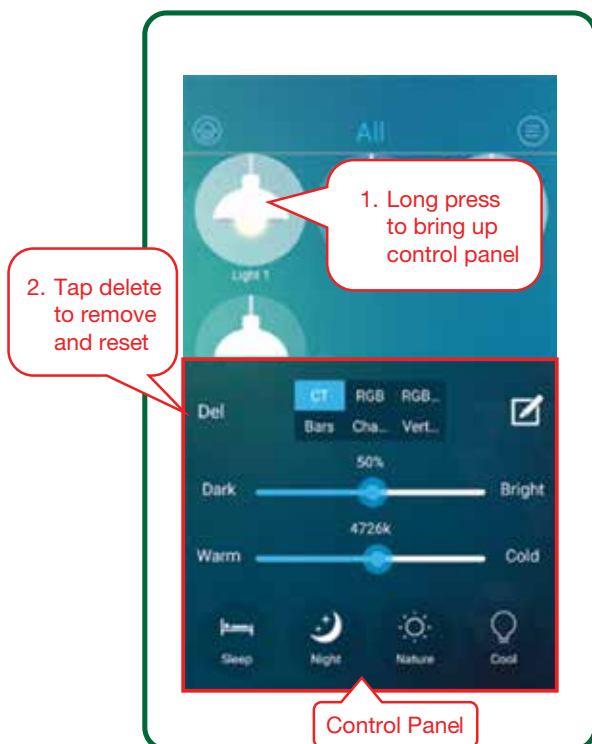
Select the luminaire(s) by ticking the circles next to each, then tap OK to add them to your App. The new luminaire(s) will be added to the app home screen.

If you are unable to view your new luminaire(s) on the app home screen, then please proceed with one of the following:



A. Enter Default Network PIN/Password: 1234

Temporarily change your Network PIN/Password to 1234 by following the steps to **Alter Network Password** as described in section 1, page 3. Then go back to the home screen and repeat section 2, page 4 to add luminaires. Once you have added the luminaires, then reset the luminaire(s) as follows:



Once you have deleted the luminaire(s), change the Network PIN/Password back to what you had initially setup by following the steps to Alter Network Password as described in section 1. Then repeat section 2 to add luminaires.

If you are still unable to view your luminaire(s) then a manual reset of the luminaire(s) will be required, as below.

B. Manual Reset of Luminaires

To manually reset your luminaire, start by switching the luminaire on. If being switched on for the first time, then wait for the luminaire to exit the warm-up period (indicated by the light remaining at a constant output). Then follow the below sequence:

1. Off for 5 seconds
2. On for 15 seconds
3. Off for 5 seconds
4. On for 15 seconds
5. Off for 5 seconds
6. On for 15 seconds
7. Off for 5 seconds
8. On for 15 seconds

****We advise using a stopwatch to ensure precise timing***

Continue this sequence until the point where the luminaire begins to flash at the next ON sequence. Once the luminaire(s) has reset, repeat section 2 to add luminaires.

This is a mesh system, so each light acts as both a transmitter and receiver, so barriers such as walls should not effect full communication throughout the system. However,sometimes you may need to search again for missing devices which may not have been captured in the first search above. Stand closer to those fittings, and add devices again to ensure they get captured.

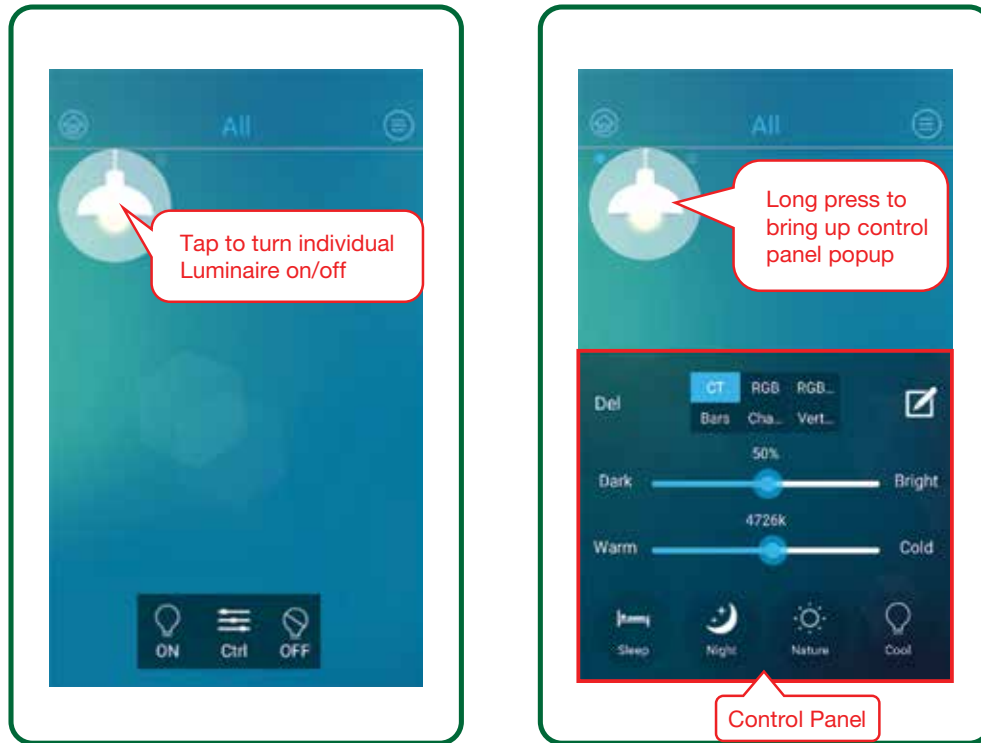
If the installation is part of a multi unit complex, there is a possibility that the Mesh may pickup, and add devices from neighbouring units if they are not already assigned. When checking operation of each device, delete those which are not evident in the unit being commissioned. These can be picked up again when commissioning the next unit under different Network name.

3. Basic Luminaire Control

Your devices are now all individually or group controllable to switch on/off, and to adjust the light output and the colour temperature. They are unassigned to any location, group, or scene. In this screen, devices can only be controlled individually.

A. Individual Control of Luminaires

Each luminaire can be individually controlled as below:

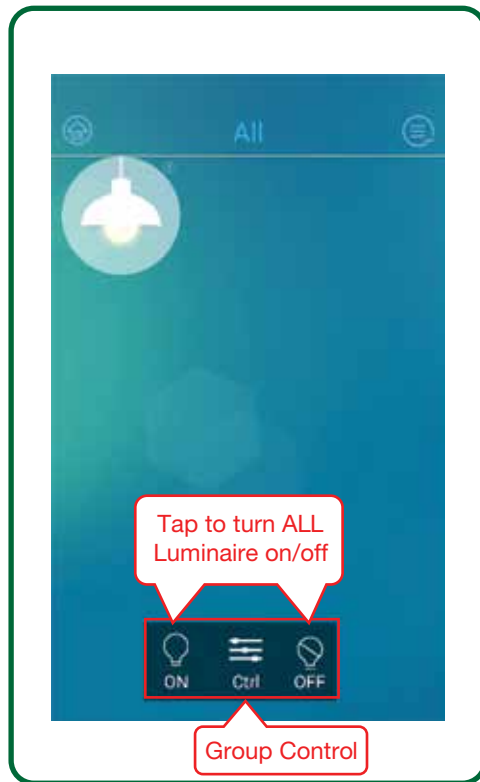


The Control Panel allows you to dim and change the colour temperature using the sliders. As you slide, the screen will show the value on the scale, and when you release contact on the slide the, luminaire will change to that setting.

The icons across the bottom of the screen are factory-set scenes (Sleep, Night, Nature etc.). Tap the icon to change to that scene. You can also add more scenes (refer to section 6).

B. Group Control of Luminaires

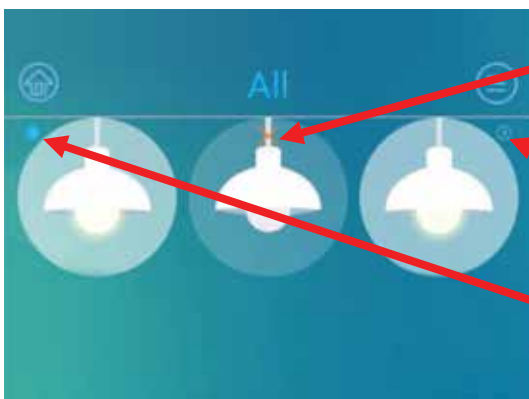
To control all luminaires at the same time, use the controls at the bottom of the App home screen. To bring up the group control panel, tap on the **Ctrl** icon (☰):



The Control Panel allows you to dim and change the colour temperature using the sliders. The value will change as you slide, and when you release contact on the slider the luminaire will change to that setting.

The icons beside the ON/OFF controls at the bottom of the screen are the scene controls. Tap the Night icon to change to that scene. You can also add more scenes using the + icon (refer to section 6).

Check the operation of each fitting that has been Bluetooth connected to the App by adjusting the brightness and colour. This confirms they are in your system and operating correctly.



An orange cross through the luminaire indicates that it is not connected to the mains supply (switched off).

The Bluetooth icon indicates the “master” luminaire that is transmitting commands over the Bluetooth mesh network (this master function may change to other luminaire’s as you move between other areas of the home).

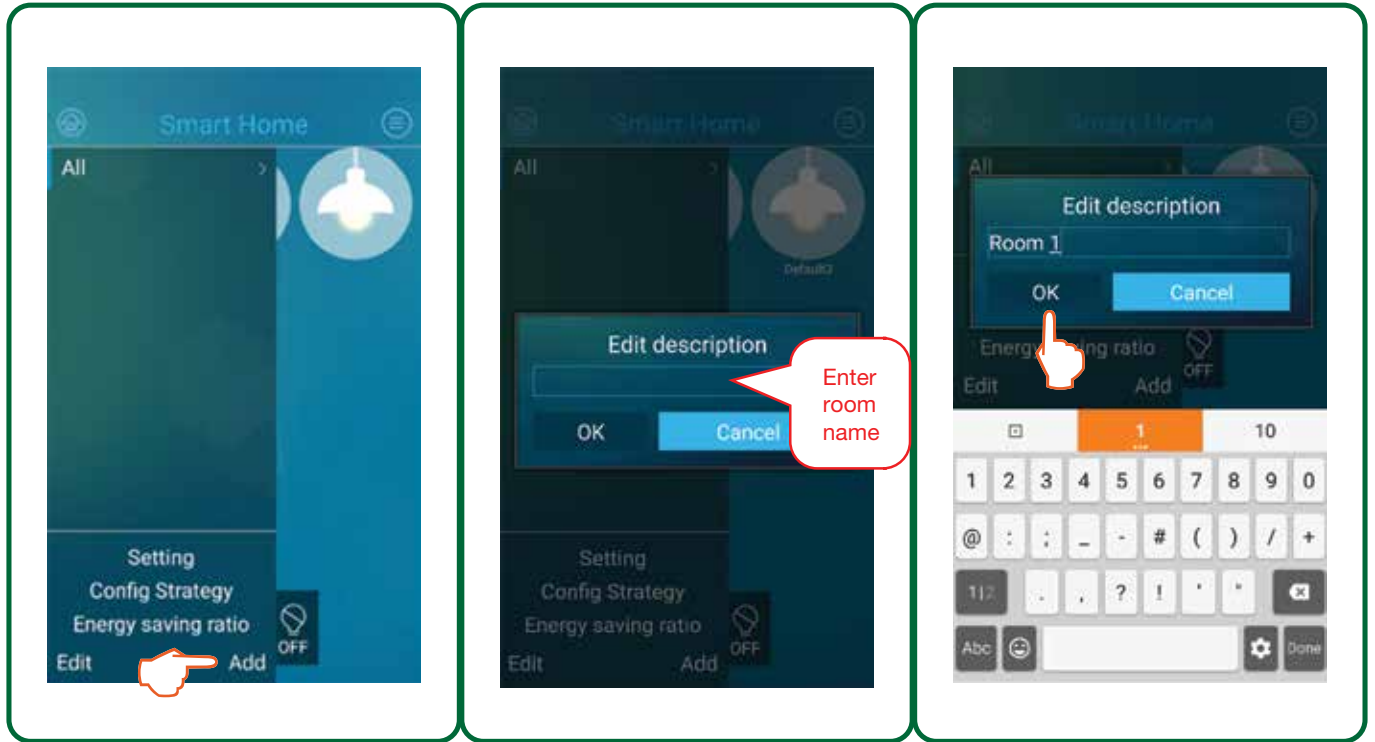
The blue dot indicates the luminaire that has been selected for individual control.

4. Room and Luminaire Setup

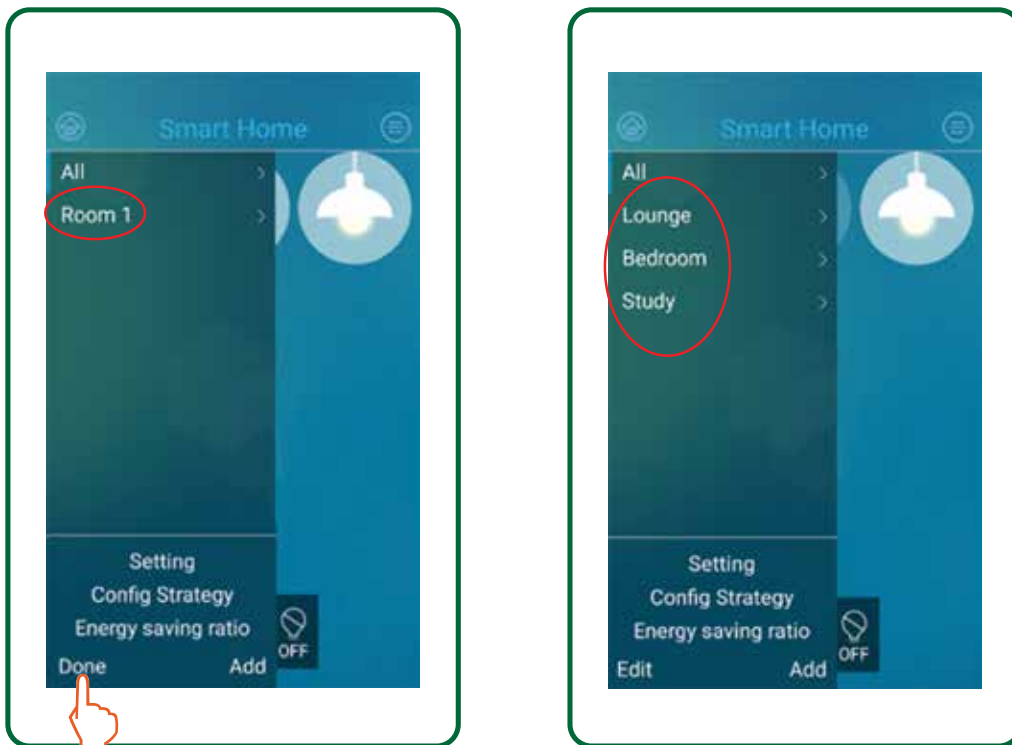
Now that you have checked that all luminaires are loaded to the App and are operating correctly, the next step is to add room(s), rename the luminaires(s), and add the luminaire(s) to the room(s) you have created.

A. To Add Rooms

Go to the App home screen, tap the home icon (🏠), select **Add**, enter room description, and tap **OK**.



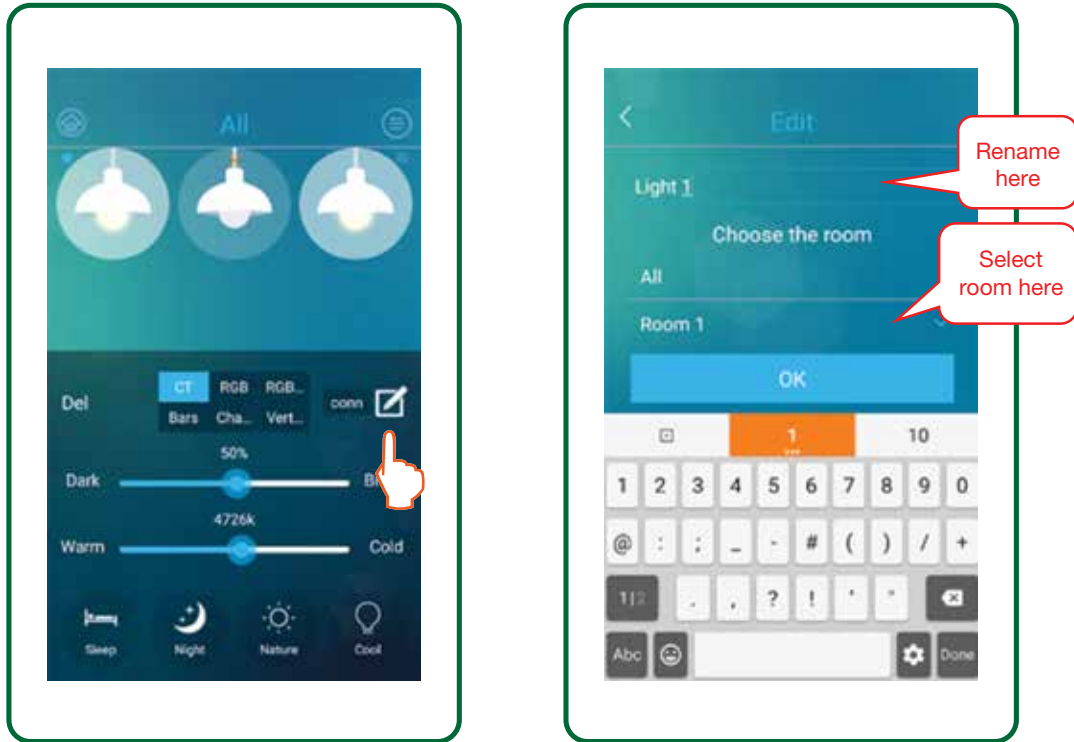
The room(s) will be added as below, and you can now add luminaires to the room(s) you have created. Once you have completed adding rooms, tap on **Done**. Multiple rooms can be added as the image below:



B. To Rename Luminaires

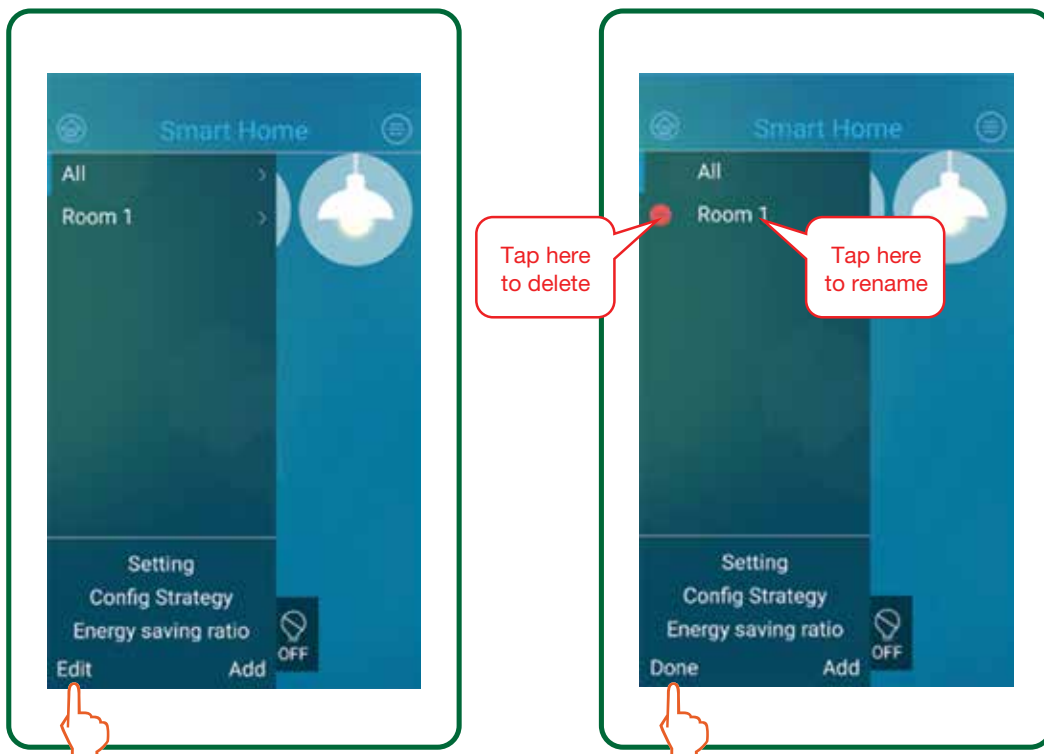
Go to the the App home screen and activate the Control Panel for each luminaire (by long pressing that luminaire), click the Edit icon (✎), rename each luminaire as indicated in the **Edit** screen below and click **OK**.

The luminaire will now have a personal identifier so you know within the App which fitting is which. We suggest these names are kept simple e.g. Main Bed 1, Main Bed 2, etc. You can also add luminaires to rooms you have created by selecting the room under **Choose the room** (refer to section 5.A).



C. To Rename or Delete Rooms:

Go to the App home screen, tap on the home icon (🏠), and select **Edit**, click on the room description to rename, or click on the red dot to delete the room. When complete, select **Done**.



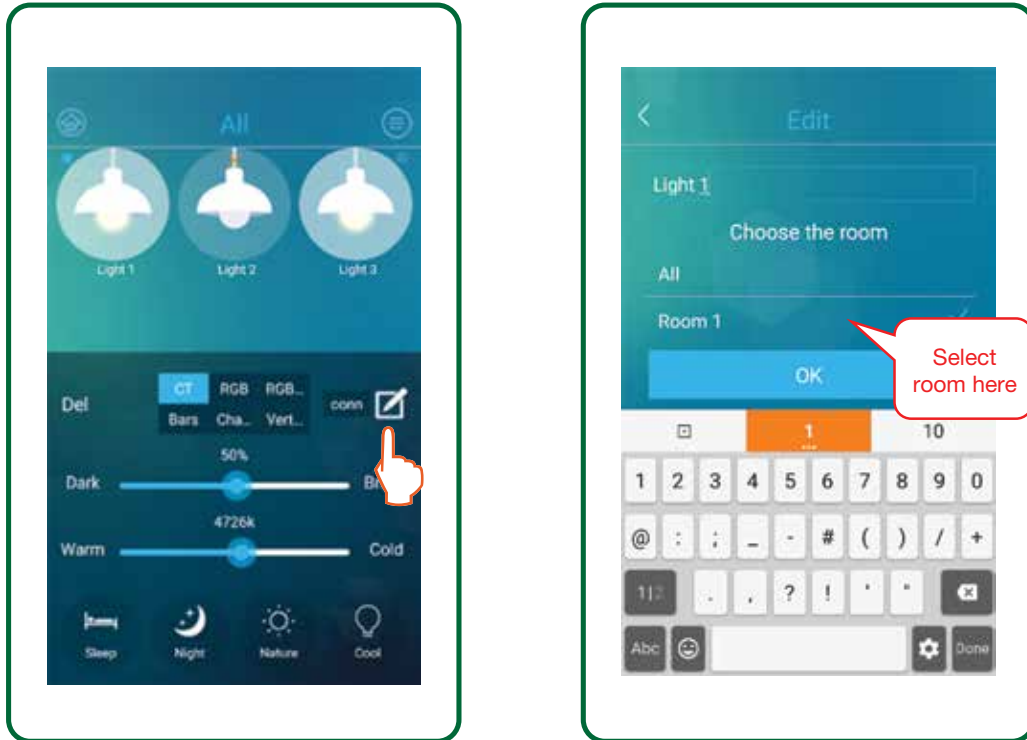
When deleting a room, any previously assigned devices in that room will still remain in the 'ALL' as unassigned fittings.

5. Assigning Devices to Rooms

This is the process to assign each luminaire to the room(s) you have created.

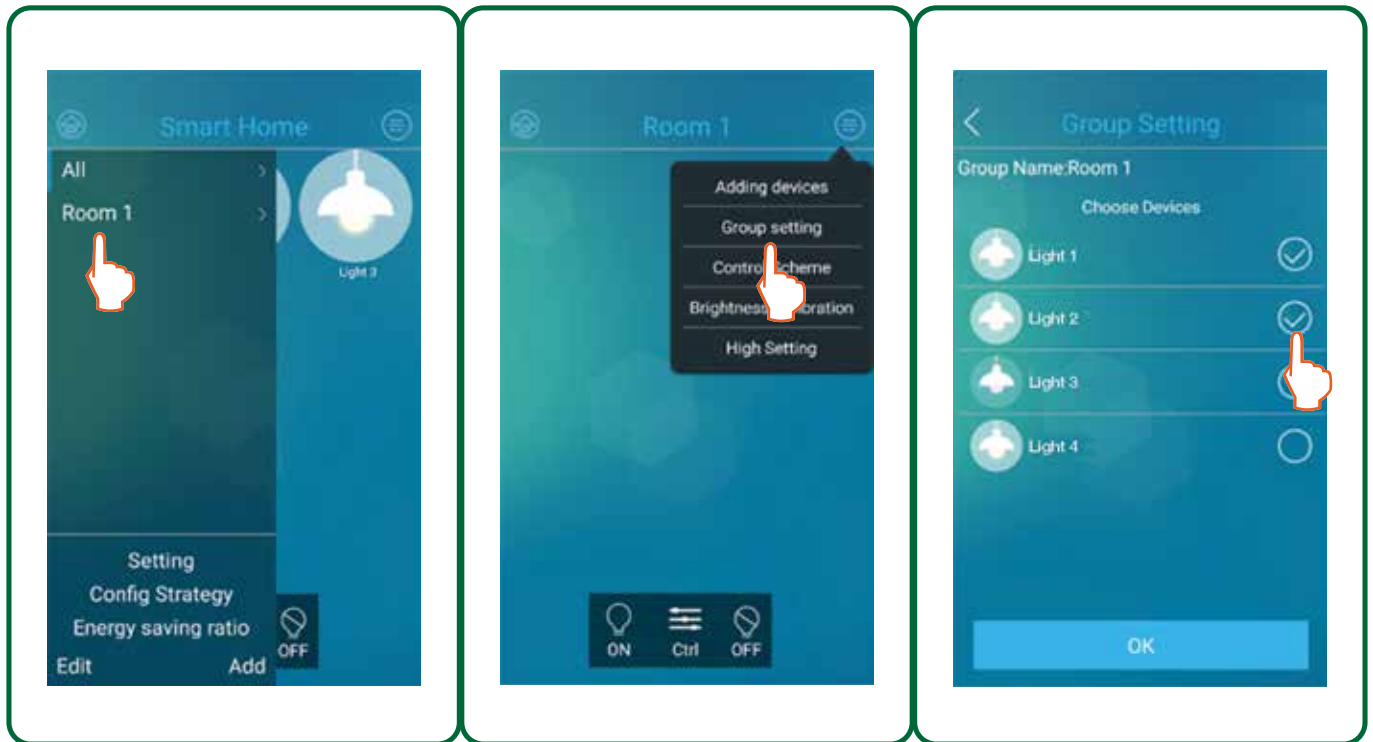
A. Selecting Individual Luminaires to Add to a Location

To add individual luminaires to a specific location, long press that luminaire to bring up its Control Panel, then click on the edit icon (✎). Select the room you want to assign that device to and click OK. The device will now appear in that room.



B. Selecting a Group of Luminaires to Add to a Location

To add a group of devices to a specific location, first select that location under the home icon (🏠), then go back to the App home screen and click on menu icon (☰). Next, select **Group Setting**, select all the devices you want to add to that room, and click **OK**.



Once completed, all named luminaires will be located in the selected rooms. To check this, click the home icon (🏠), and check each room. If any fittings are loaded to the wrong room, delete the fitting from the room, then reassign it to correct room from the ALL list.

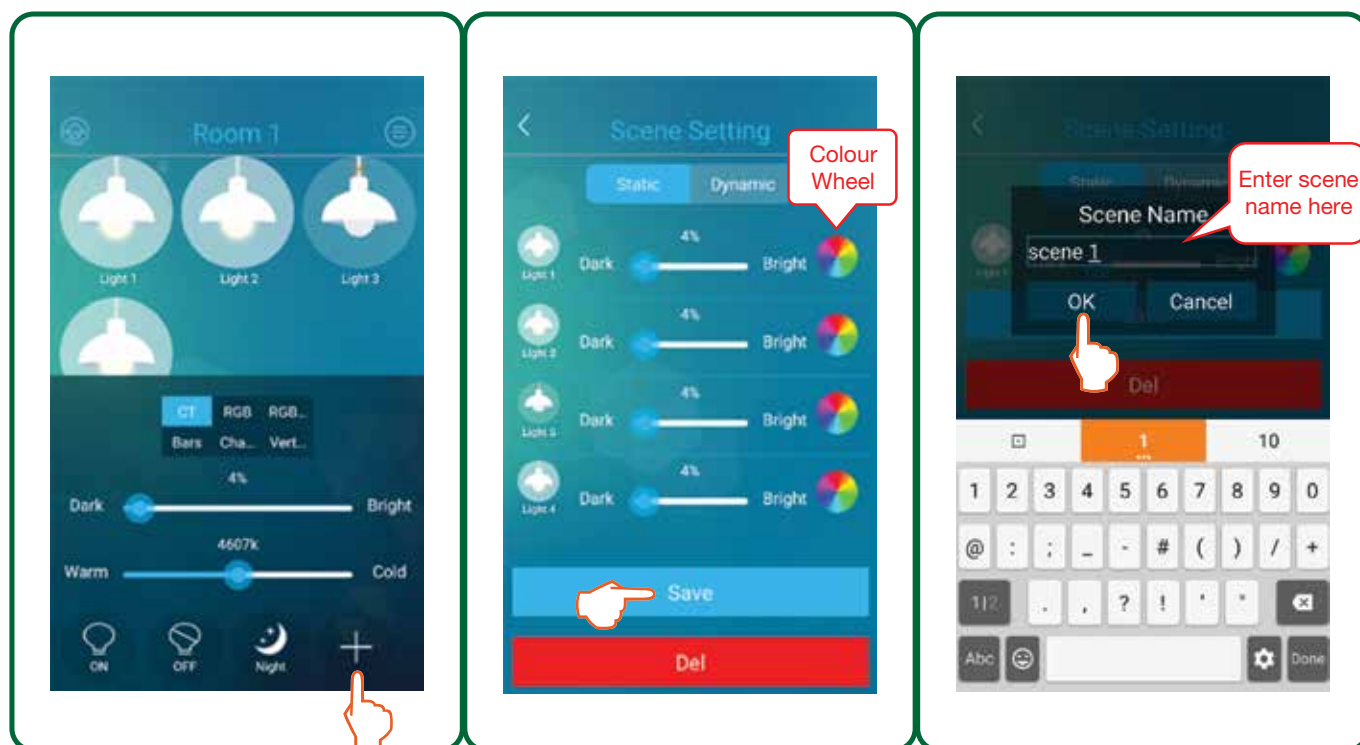
Please note that all luminaires assigned to specific rooms are still available under **All**, from which each can still be controlled independently.

6. Creating Scenes

Setting scenes are an excellent method to select a group of lights and program your light settings for a particular purpose or task. It is recommended to set these scenes only after luminaires are assigned to rooms, and that you set those scenes within each room.

From the App home screen go to the control interface (☰) and click on the + icon at bottom of the screen. If you have several scenes already loaded, you will need to swipe this line left in order to access the + icon and add more scenes.

Adjust the brightness of each luminaire using the respective slider. Click on the colour wheel to adjust the colour temperarue to the desired level. Once you are satisfied with the settings, click on **Save** to name the scene, and then click on **OK** to save. The luminaire(s) will flash on to off three times as a visual confirmation.

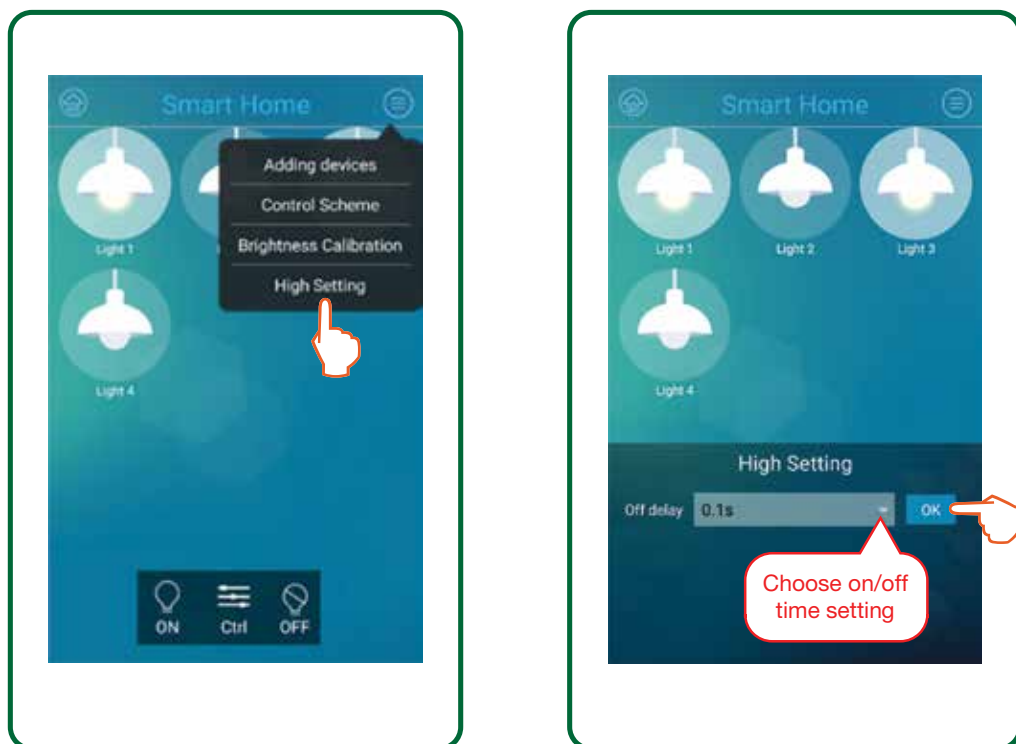


We recommend keeping the scene name short (5-6 characters), so that it is fully readable when it appears in the Scenes section at bottom of the Control Panel. We also recommend you select a name that reflects the intended task using that scene e.g. Arrive, Movies, Dine, Cook, Sew, Read, Vacate, etc.

Please note that up to 1056 different scenes can be set under a single network password.

7. Dimming Delay

Dimming delay is a feature to adjust the time it takes for the luminaire to turn ON or OFF. From the app main screen, tap the menu icon (☰) and select **High Setting**. The High Setting panel will open at the bottom of the screen. Use the drop-down box to change the luminaire on/off delay time, and then select **OK**.



IMPORTANT!!! Please note the dimming delay applies to all installed luminaires on the network.



0800 140 150
www.simx.co.nz

Technical support ph: 09 259 1662 | technical@simx.co.nz

Distributed by: Simx Limited

Simx reserves the right to alter technical specifications without prior warning.