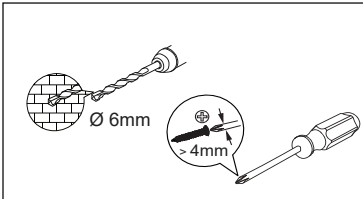
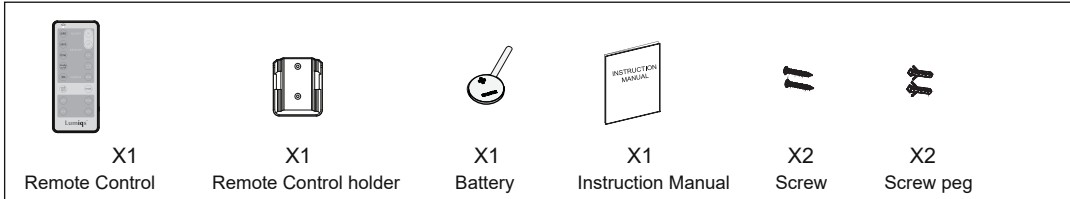


## INTELLIGENT LED HIGHBAY / LED MIDBAY SET-UP & OPERATION MANUAL

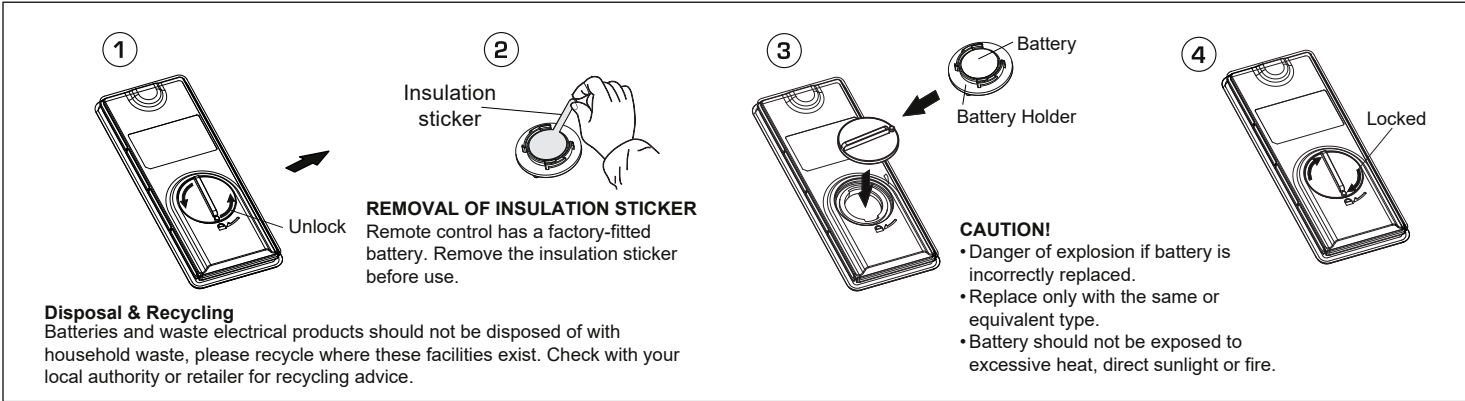
### TOOLS NEEDED



### KIT CONTENTS



### REMOTE CONTROL OPERATION



### 1) SINGLE UNIT SET-UP

Please allow the PIR motion detector to complete warm-up period (approx. 90 sec.) before proceed remote control setting.

#### 1.1) Functional description

#### ON

- Switches ON the LED light at 100% brightness.
- When button is pressed, LED light blinks twice then remains permanently ON.

#### AUTO

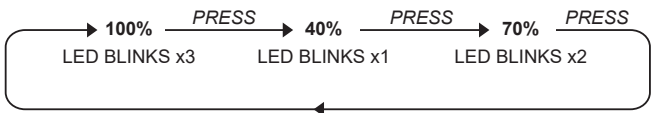
- Activates PIR motion sensor function.
- When button is pressed, LED light blinks twice to confirm PIR mode.
- LED light will illuminate automatically when motion is detected, provided that the ambient light level is darker than the set LUX value.
- Light ON duration depends on the selected timing (Adjustment TIME). ON duration will be extended as long as there is movement.

#### OFF

- Switches the LED light OFF.
- Light stays Off even when power resumes after an interruption.
- When button is pressed, LED light blinks twice then extinguishes.
- To exit from OFF mode, press Auto or ON.

#### SENS

- Toggles the sensitivity level of the PIR motion detector (AUTO/TEST mode only).
- While setting up, PIR sensitivity is at 100%.
- Default setting is 100%.
- Each time the button is pressed, the sensitivity setting changes to the next level. Button toggling must be completed within 10 seconds.



- If false activation is regularly encountered, consider reducing the motion sensor sensitivity using the Remote Control.

#### LUX

- Toggles the level of ambient light required for the PIR motion detector to be active (AUTO mode only).
- Default setting is 5000 lux.
- Each time the button is pressed, the Lux setting changes to the next level. Button toggling must be completed within 10 seconds.



#### TIME

- Toggles the ON Time duration of the LED light when motion is detected (AUTO mode only).
- Default setting is 5 mins.
- Each time the button is pressed, the ON Time setting changes to the next level. Button toggling must be completed within 10 seconds.



#### Standby ON/OFF

- With STANDBY ON, the LED light will remain illuminated constantly at 15% brightness under darkness conditions to provide comfort illumination. When motion is detected, the LED light will boost to 100% brightness (AUTO mode only).
- Default setting is OFF.
- When button is pressed, STANDBY ON is activated - LED light blinks once to confirm.
- Press button again within 10 secs to cancel - LED light blinks twice to indicate STANDBY OFF.



#### Harvest ON/OFF

- With HARVEST ON, the LED light will automatically adjust its brightness to maintain an illumination level of approx. 200 lux in the local area (AUTO mode only). The light will automatically switch off if the lux levels remains higher than 250 lux for about 4 minutes. This ensures daylight or artificial light from other sources is considered to save energy and avoid over-lighting.
- Default setting is OFF.
- When button is pressed, HARVEST ON is activated - LED light blinks once to confirm.
- Press button again within 10 secs to cancel - LED light blinks twice to indicate HARVEST OFF.

#### Neighbour 100%

- Not applicable for "Standalone" or single unit.

#### Neighbour 30%

- Not applicable for "Standalone" or single unit.

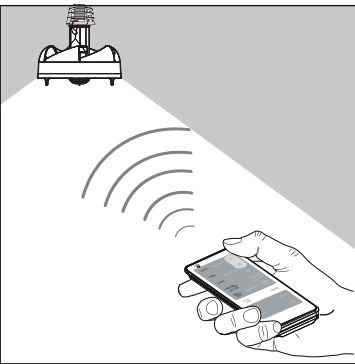
#### Reset

- To return an individual unit to its default setting (ON mode), point the remote control handset at the unit and press the RESET button. LED light will blink twice to confirm.

# Lumiqs™

The Remote Control handset is used to set-up and control the operation and function of the LED Highbay and LED Midbay.

### LED MIDBAY



### LED HIGHBAY



#### Walk Test

- Allows testing of PIR motion sensor detection range (AUTO mode only).
- When button is pressed, unit goes into WALK TEST mode for ten minutes duration.
- During WALK TEST the LED light is illuminated initially at 15% brightness. With each motion detected, the LED light boosts to 100% brightness for 2 secs duration.
- Adjust the sensitivity level of the PIR motion sensor (SENS) to achieve desired detection performance.
- WALK TEST will time-out after 10 minutes, or can be exited by pressing the AUTO, ON or OFF buttons.

### 2) MULTIPLE UNIT SET-UP (GROUPED)

if installing multiple LED Highbay/LED Midbay units within the same area or facility, they can be configured in groups, providing intelligent functionality and enhanced safety and comfort for the user. For example, in a warehouse setting, all units in a particular aisle could be grouped together such that if any single unit detects motion, its adjacent neighbours are simultaneously illuminated, either at full power 100% or dimmed 30%.

#### 2.1) Functional Description

#### ON

- Switches ON the LED light at 100% brightness.
- When button is pressed, LED light blinks twice then remains permanently ON.
- To set ON status for ALL members of a group, point the remote control handset at any group member, then press LINK - all group members will dim to 30% brightness.
- Press ON button, followed by END button to exit group set-up.
- All group members will now be in ON mode.

## INTELLIGENT LED HIGHBAY / LED MIDBAY SET-UP & OPERATION MANUAL

### AUTO

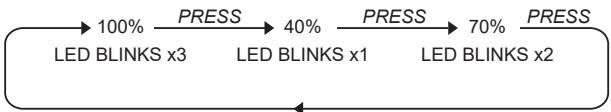
- Activates PIR motion sensor function.
- When button is pressed, LED light blinks twice to confirm PIR mode.
- Under darkness conditions, LED light will illuminate automatically when motion is detected.
- Light ON duration depends on the selected timing (Adjustment TIME). ON duration will be extended as long as there is movement.
- To set AUTO status for ALL members of a group, point the remote control handset at any group member, then press LINK - all group members will dim to 30% brightness.
- Press AUTO button, followed by END button to exit group set-up.
- All group members will now be in AUTO mode.

### OFF

- Switches the LED light OFF.
- Light stays Off even when power resumes after an interruption.
- When button is pressed, LED light blinks twice then extinguishes.
- To exit from OFF mode, press Auto or ON.
- To set OFF status for ALL members of a group, point the remote control handset at any group member, then press LINK - all group members will dim to 30% brightness.
- Press OFF button, followed by END button to exit group set-up.
- All group members will now be in OFF mode.

### SENS

- Toggles the sensitivity level of the PIR motion detector (AUTO/TEST mode only).
- While setting up, PIR sensitivity is at 100%.
- Default setting is 100%.
- Each time the button is pressed, the sensitivity setting changes to the next level. Button toggling must be completed within 10 seconds.
- To adjust motion detector sensitivity for ALL members of a group, point the remote control handset at any group member, then press LINK - all group members will dim to 30% brightness.
- Press SENS button to scroll through the options as described above, followed by END button to exit group set-up.
- All group members will now adopt the desired sensitivity setting.



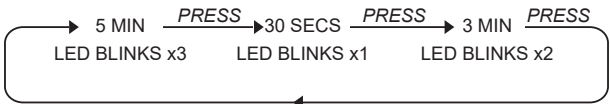
### LUX

- Toggles the level of ambient light required for the PIR motion detector to be active (AUTO mode only).
- Default setting is 5000 lux.
- Each time the button is pressed, the Lux setting changes to the next level. Button toggling must be completed within 10 seconds.
- To adjust lux level setting for ALL members of a group, point the remote control handset at any group member, then press LINK - all group members will dim to 30% brightness.
- Press LUX button to scroll through the options as described above, followed by END button to exit group set-up.
- All group members will now adopt the desired lux setting.



### TIME

- Toggles the ON Time duration of the LED light when motion is detected (AUTO mode only).
- Default setting is 5 mins.
- Each time the button is pressed, the ON time setting changes to the next level. Button toggling must be completed within 10 seconds.
- To adjust time-on duration for ALL members of a group, point the remote control handset at any group member, then press LINK - all group members will dim to 30% brightness.
- Press TIME button to scroll through the options as described above, followed by END button to exit group set-up.
- All group members will now adopt the desired time-on setting.



### Standby ON/OFF

- With STANDBY ON, the LED light (or a group) will remain illuminated constantly 15% brightness under darkness conditions to provide comfort illumination. When motion is detected, the LED light will boost to 100% brightness (AUTO mode only).
- Default setting is OFF.
- When button is pressed, STANDBY ON is activated - LED light blinks once to confirm.
- Press button again within 10 secs to cancel - LED light blinks twice to indicate STANDBY OFF.
- To toggle STANDBY ON/OFF for ALL members of a group, point the remote control handset at any group member, then press LINK - all group members will dim to 30% brightness.
- Press STANDBY button to toggle the function on/off as described above, followed by END button to exit group set-up.
- All group members will now adopt the desired Standby setting.
- When Standby is set ON/OFF for an individual unit within a group, the unit is able to be illuminated when a neighbouring unit detects motion. However, if the unit itself detects motion, no neighbouring units will be illuminated.
- To return to neighbour link operation, press neighbour 30% or 100%.

### Harvest ON/OFF

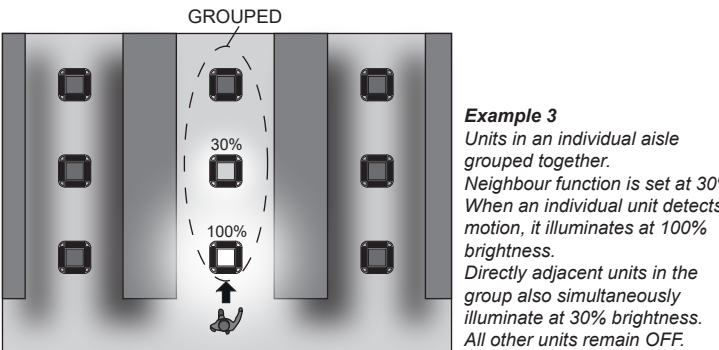
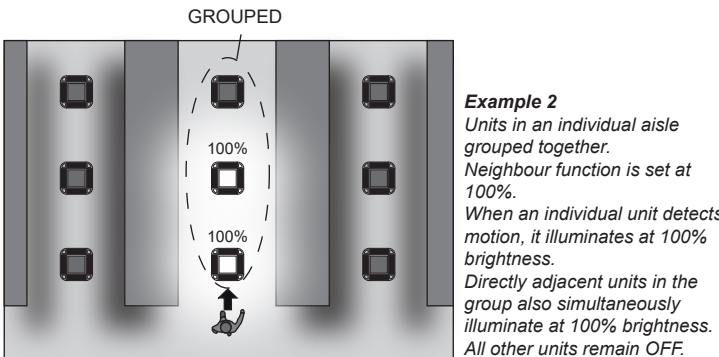
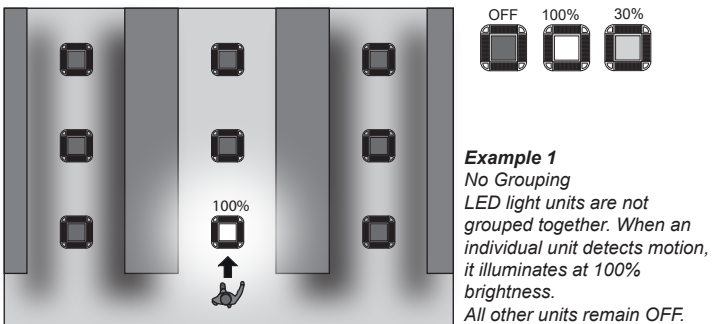
- With HARVEST ON, the LED light will automatically adjust its brightness to maintain an illumination level of approx. 200 lux in the local area (AUTO mode only). This ensures daylight or artificial light from other sources is considered to save energy and avoid over-lighting.
- Default setting is OFF.
- When button is pressed, HARVEST ON is activated - LED light blinks once to confirm.
- Press button again within 10 secs to cancel - LED light blinks twice to indicate HARVEST OFF.
- To toggle Harvest function ON/OFF for ALL members of a group, point the remote control handset at any group member, then press LINK - all group members will dim to 30% brightness.
- Press HARVEST ON/OFF button to toggle the function on/off as described above, followed by END button to exit group set-up.
- All group members will now adopt the desired Harvest setting.
- To return to neighbour link operation, press neighbour 30% or 100%.

### Neighbour 100% or 30%

- When multiple units are grouped together in AUTO mode, the user can set the brightness level at which neighbouring units will illuminate when an individual unit detects motion.
- To set Neighbourhood brightness at 100%, point the remote control handset at the specific unit and press NEIGHBOUR 100% button. The unit will blink twice to confirm. In operation if the unit detects motion, it will illuminate at 100% brightness and its immediate neighbouring units will also illuminate at 100% brightness.

- To set Neighbourhood brightness at 30%, point the remote control handset at the specific unit and press NEIGHBOUR 30% button. The unit will blink twice to confirm. In operation if the unit detects motion, it will illuminate at 100% brightness and its immediate neighbouring units will also illuminate but at 30% brightness.
- To set Neighbourhood brightness for ALL members of a group, point the remote control handset at any group member, then press LINK - all group members will dim to 30% brightness.
- Press either NEIGHBOUR 100% or 30% button to select the desired setting as described above, followed by END button to exit group set-up.
- All group members will now adopt the desired neighbourhood brightness setting.

For more details on neighbour 100% and 30%, refer the below diagram.



### Reset

- To return an individual unit to its default setting (ON mode), point the remote control handset at the unit and press the RESET button. LED light will blink twice to confirm.
- To return ALL members of a group to the default setting, point the remote control handset at any group member, then press LINK - all group members will dim to 30% brightness.
- Press RESET button. All units will blink twice to confirm. Press END button to exit group set-up.
- All group members will now adopt the default setting (ON mode) and standalone operation.
- Group link relationship maintain.
- To return to Neighbour link relationship, point the remote control handset at any group member, then press LINK → Neighbour 30% or 100% → END.

### Walk Test

- Allows testing of PIR motion sensor detection range (AUTO mode only).
- When button is pressed, unit goes into WALK TEST mode for ten minutes duration.
- During WALK TEST the LED light is illuminated initially at 15% brightness. With each motion detected, the LED light boosts to 100% brightness for 2 secs duration.
- Adjust the sensitivity level of the PIR motion sensor (SENS) to achieve desired detection performance.
- WALK TEST will time-out after 10 minutes, or can be exited by pressing the AUTO, ON or OFF buttons.
- To enable WALK TEST mode for ALL members of a group, point the remote control handset at any group member, then press LINK - all group members will dim to 30% brightness.
- Press WALK TEST button. All units in the group will enter walk test mode.

### 2.2) Setting up and/or amending a group

#### New Group

- All units should be in the default ON state (100% output).
- Point the remote control handset towards the 1st unit in the group and press the LINK button. The unit will dim to 30% brightness.
- Press the ADD button to begin the grouping process.
- Point the remote control handset towards the 2nd unit in the group and press ADD button. The unit will dim to 30% brightness.
- Repeat this process for the 3rd, 4th, 5th, etc. units.
- Be sure to add the units to the group in the correct order (1st, 2nd, 3rd, etc.)
- After adding the last unit in the group, with the remote control still pointing at the last unit press the END button to exit the group set-up.
- Group set-up will also end if there are no further ADD commands received within a ten minute period.
- Upon exit, all units will revert to AUTO mode.

#### Adding units to an existing group

- Point the remote control handset towards a member of the existing group that is adjacent to the desired new group member.
- Press the LINK button. All units in the group will illuminate at 30% brightness.
- Point at the existing unit you wish to link with and press ADD, then point at the unit you wish to ADD and press the ADD button. The unit will illuminate at 30% brightness.
- Repeat to add any further units to the group, then press the END button to exit the group set-up.
- Please note that if the desired new group member(s) is already part of another group, the above operation will overwrite the original group link and replace it with the new group.

#### To remove a unit from an existing group

- Point the remote control handset towards the target unit and press the LINK button. All units in the group will illuminate at 30% brightness.
- Press the BREAK button. The target unit will turn off and resume AUTO mode.
- Press the END button to exit the group set-up. All units in the group will revert back to AUTO mode.

#### To remove all group relationships

- Point the remote control handset at any member of the group.
- Press LINK → RESET → RESET buttons.
- All group links are removed. All units default back to ON mode.