

**MANROSE**<sup>®</sup>  
DESIGNER SERIES

# CONTOUR

FAN SYSTEMS

*Setting the*  
**STANDARDS** *in*  
**VENTILATION**  
*Solutions*



**Manrose Contour Fan Systems**

the new standard in powerful, stylish, easy to install, configurable extract systems

## Fans designed to meet G4 Building Code and the Healthy Homes Standard

The G4 Building Code covers the mandatory extract ventilation requirements for bathrooms and kitchens and the AS/NZS standards provide the latest guidelines for internal wet area zones in general. In addition, the Healthy Homes Standard makes it a requirement to fit extract fans in rental properties.

### Keeping things simple

Manrose have designed the Contour range of fans for specific room applications as defined as acceptable solutions to G4 and as prescribed in NZS 4303:1990, AS 1668: Part 2: 2002 and other leading standards in ventilation as well as the Healthy Homes Standard.

### Great installers can select with confidence

Our installers ensure the basics are always done right with duct runs and numbers of bends kept to a minimum. Indeed, they do everything they can to make fan installs as good as they can be. Now, by choosing the Contour fan designed for a particular room application, they can also be assured that all installations comply with the relevant building code and standards. Even more challenging installs, such as complex duct runs where very high airflow rates are required for high steam areas, are catered for.

### Fan curves making it easy

The fan curves provided clearly show that the respective fan airflows delivered, with up to 10 metres of straight ducting attached, exceed the respective airflow requirements for each model.

The following performance table shows the minimum extraction rates required for installed systems as opposed to the fan only.

Room	Intermittent (min)	Continuous (min)
Toilet <sup>1)</sup>	25 l/s	10 l/s
Bathroom/shower	25 l/s	10 l/s
Laundry <sup>2)</sup>	40 l/s	-
Kitchen	50 l/s	12 l/s

### Form and function

Good performance is not enough. The new range of fans have a wide selection of fascias available making sure that the end users have a great looking solution to meet their bathroom design as well.

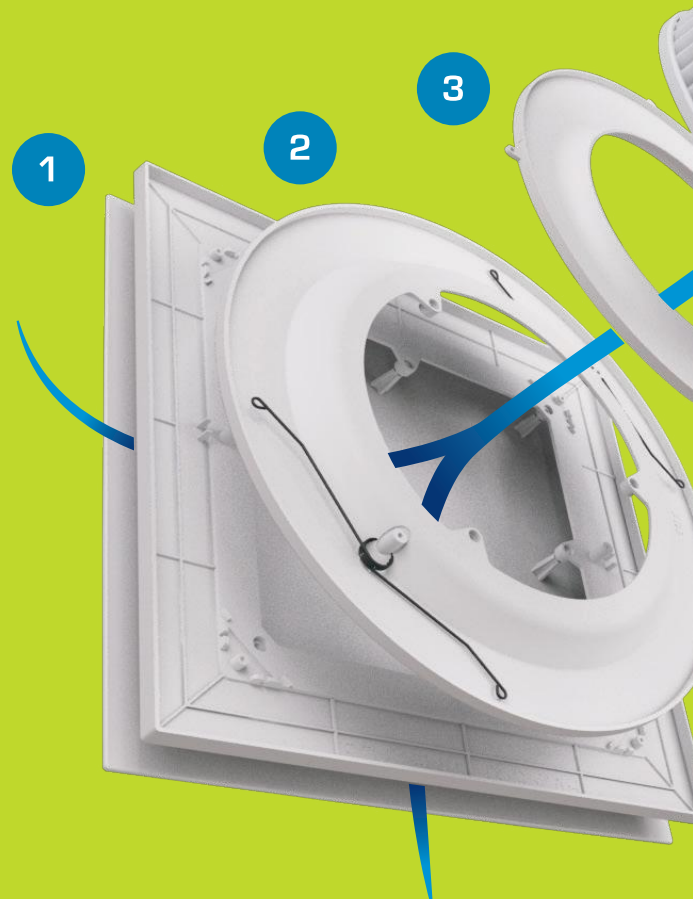
Fan	Round or Square Fascia Options
Toilet	White or Black (with or without LED)
Bathroom	White or Black (with or without LED)
Kitchen and Laundry	White or Black (with or without LED)
High Steam Area	White (fitted)

<sup>1)</sup> Toilets only require ventilation if they have no openable windows

<sup>2)</sup> Simx recommend 40 l/s for laundries with unvented non-condensing tumble dryers as covered in AS 1668: Part 2 2012

## Solution Simplicity

- 1 Wide range of aesthetic round and square fascias with, or without, LED's
- 2 Spring fit fascia for onsite installation ease and speed
- 3 Profiled fan scroll cover to maximise airflow and performance
- 4 High performance, high pressure centrifugal impeller
- 5 Sealed motor with long life Japanese SI steel bearings
- 6 Knock out for cable feed for easy fit optional LED fascias
- 7 Swing out arms for easy installation – no need to screw into plasterboard and fast to fit
- 8 Integrated backdraught shutter – saves losing heat or cooling out through your fan
- 9 Deep spigot for easy duct connection
- 10 Side ducted and low profile designed to fit in multi-story buildings with restricted floor void
- 11 Pre fitted plug and lead for quick and easy on-site installation
- 12 Robust black polypropylene body to handle construction site conditions

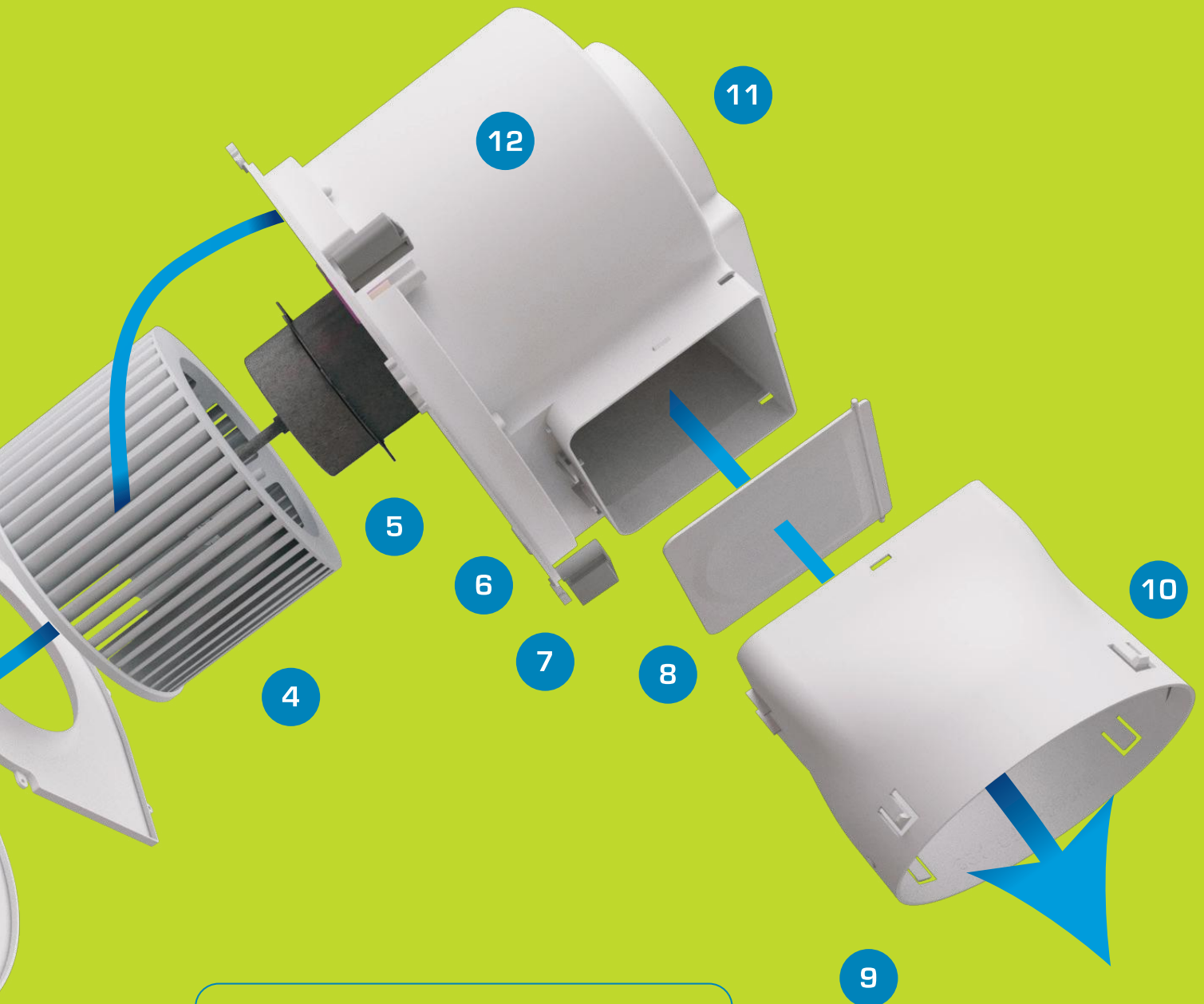


# CONTOUR

## FAN SYSTEMS

### Pressure to Perform

Style • Simplicity • Flexibility



	<b>Fan Timer - FAN2444</b> Adjustable Run ON Time & Start Delay 1 sec to 90 mins Suitable for use with all Contour fans
---	---





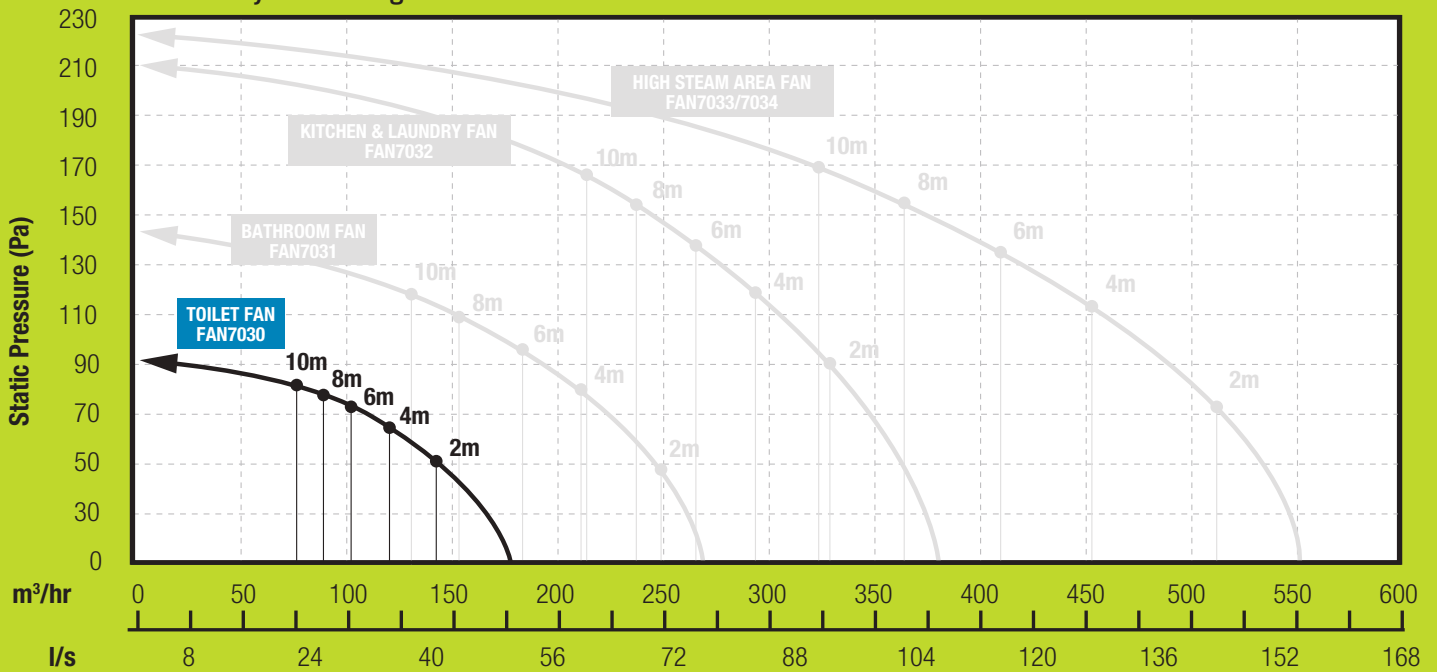
### Airflow Rates

The tables below indicate the minimum installed performance required to meet the new G4 Building Code. Only required if no operable windows.

#### Minimum System Airflow Rates

Intermittent	25 l/s
Continuous	10 l/s

### Airflow by Duct Length



### Fan and Optional Fascia Selections

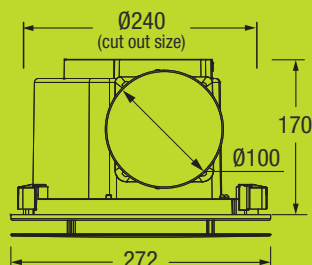
FAN7030	Toilet Fan - 100mm
DCT4502	Fascia - Round White
DCT4503	Fascia - Round Black
DCT4504	Fascia - Square White
DCT4505	Fascia - Square Black
DCT4506	LED Fascia - Round White
DCT4507	LED Fascia - Round Black
DCT4508	LED Fascia - Square White
DCT4509	LED Fascia - Square Black

### Specifications

Supply	220-240V AC
Power	30W
Max. Fan Pressure	93 Pa
Fan Performance	49 l/s, 175m³/hr
Specific Fan Power	0.61 W/l/s
Sound Level	38 dB(A)
Install Depth (min.)	200mm
LED	10W, 850 lm, 4200K
Protection Rating	IP44



### Dimensions (mm)





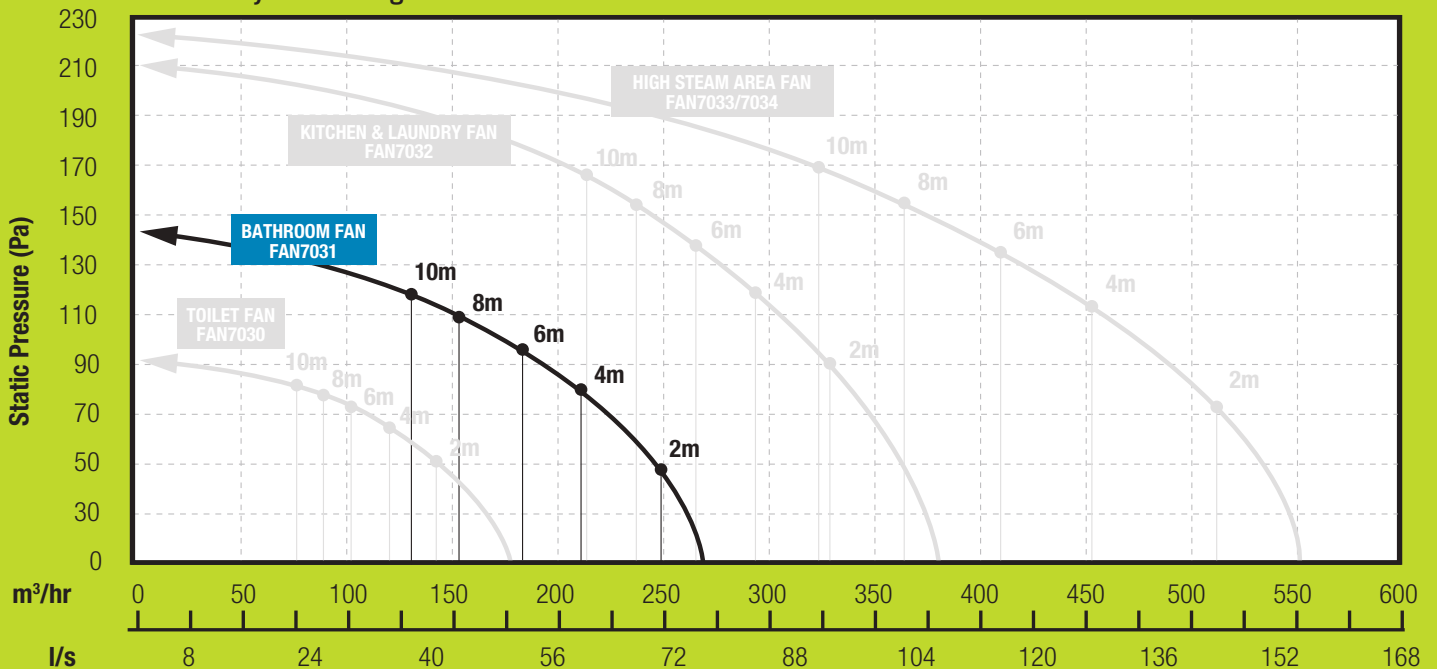
### Airflow Rates

The tables below indicate the minimum installed performance required to meet the new G4 Building Code.

#### Minimum System Airflow Rates

Intermittent	25 l/s
Continuous	10 l/s

### Airflow by Duct Length



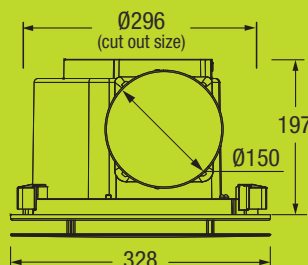
### Fan and Optional Fascia Selections

FAN7031	Bathroom Fan - 150mm
DCT4510	Fascia - Round White
DCT4511	Fascia - Round Black
DCT4712	Fascia - Square White
DCT4513	Fascia - Square Black
DCT4714	LED Fascia - Round White
DCT4515	LED Fascia - Round Black
DCT4516	LED Fascia - Square White
DCT4517	LED Fascia - Square Black

### Specifications

Supply	220-240V AC
Power	45W
Max. Fan Pressure	147 Pa
Fan Performance	77 l/s, 276m³/hr
Specific Fan Power	0.58 W/l/s
Sound Level	40 dB(A)
Install Depth (min.)	200mm
LED - Round	14W, 1265 lm, 4200K
LED - Square	14W, 1290 lm, 4200K
Protection Rating	IP44

### Dimensions (mm)



# MANROSE®

DESIGNER SERIES

# CONTOUR

## KITCHEN & LAUNDRY FAN



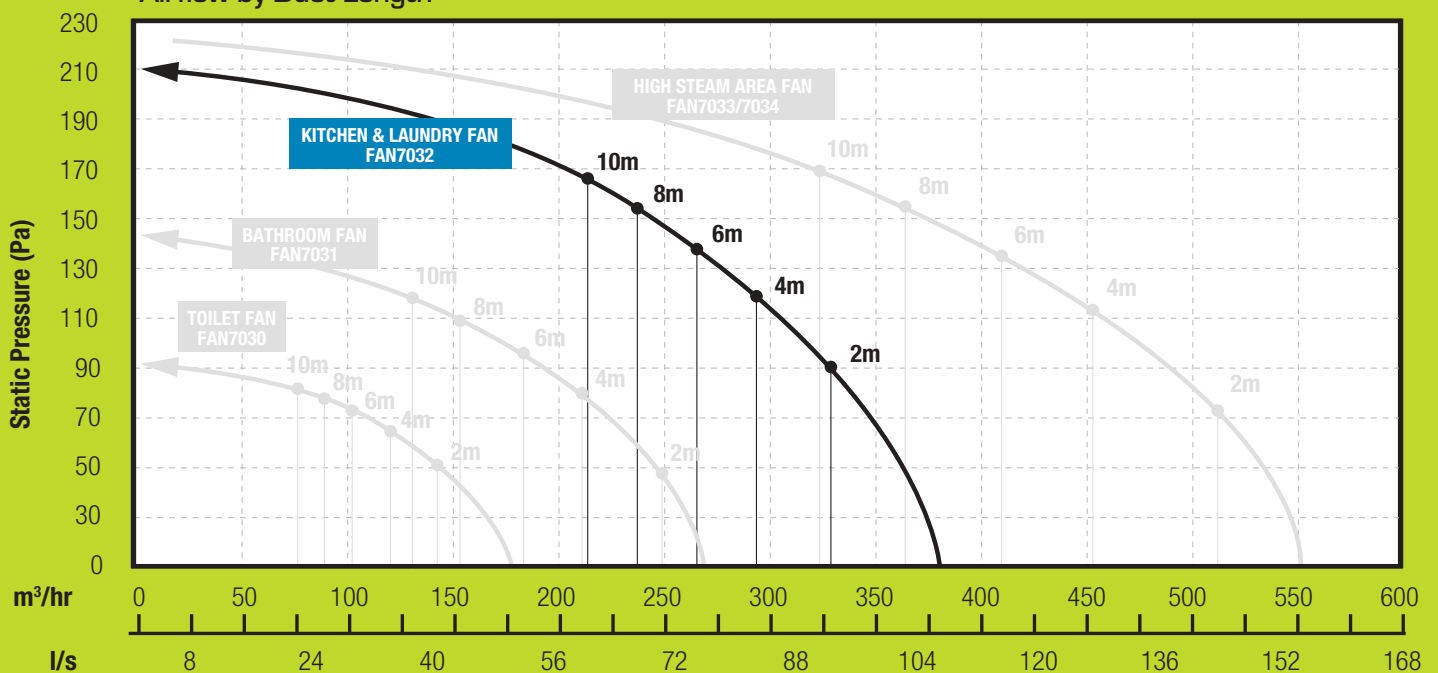
### Airflow Rates

The tables below indicate the minimum installed performance required for kitchens to meet the new G4 Building Code.

#### Minimum System Airflow Rates

Intermittent	50 l/s
Continuous	12 l/s

Airflow by Duct Length



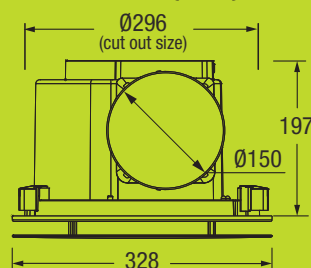
### Fan and Optional Fascia Selections

FAN7032	Kitchen and Laundry Fan - 150mm
DCT4510	Fascia - Round White
DCT4511	Fascia - Round Black
DCT4712	Fascia - Square White
DCT4513	Fascia - Square Black
DCT4714	LED Fascia - Round White
DCT4515	LED Fascia - Round Black
DCT4516	LED Fascia - Square White
DCT4517	LED Fascia - Square Black

### Specifications

Supply	220-240V AC
Power	50W
Max. Fan Pressure	210 Pa
Fan Performance	105 l/s, 378m³/hr
Specific Fan Power	0.48 W/l/s
Sound Level	42 dB(A)
Install Depth (min.)	220mm
LED - Round	14W, 1265 lm, 4200K
LED - Square	14W, 1290 lm, 4200K
Protection Rating	IP44

### Dimensions (mm)





**MANROSE®**  
DESIGNER SERIES

# CONTOUR

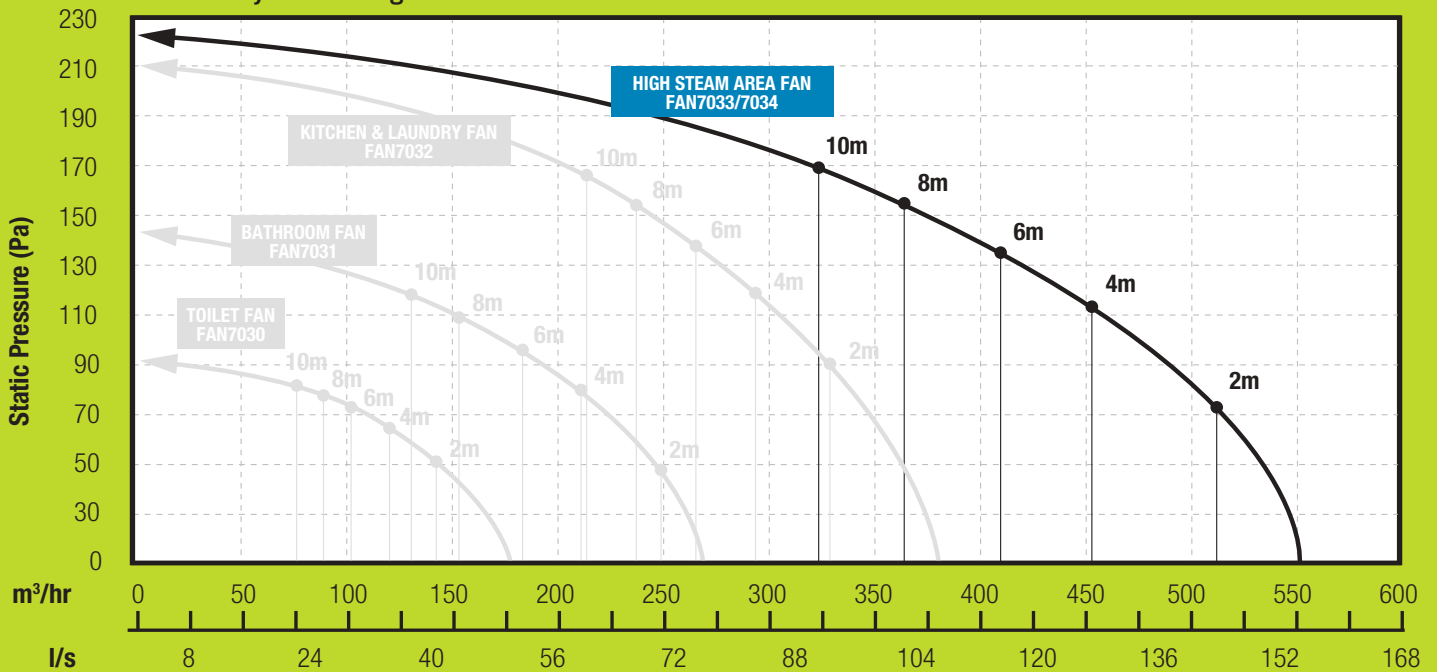
## HIGH STEAM AREA FAN



### Airflow Rates

High steam area fans are designed for any application needing higher airflow, or for applications with unusually complex, or demanding duct runs where extraordinary fan pressure is required.

Airflow by Duct Length



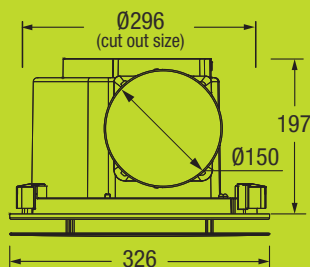
### Fan with Fitted Fascia Selections

- FAN7033 High Steam Area Fan - 150mm with Round Fascia
- FAN7034 High Steam Area Fan - 150mm with Square Fascia

### Specifications

Supply	220-240V AC
Power	106W
Max. Fan Pressure	220 Pa
Fan Performance	153 l/s, 550m³/hr
Specific Fan Power	0.69 W/l/s
Sound Level	42 dB(A)
Install Depth (min.)	220mm
Protection Rating	IPX4

### Dimensions (mm)



**MANROSE®**  
DESIGNER SERIES

# CONTOUR

## FAN SYSTEMS

Manrose leads the market in air movement and air extraction. Developed and designed to meet the specific application needs of the New Zealand market, Manrose fans perform to those exacting standards for the life of the product.

Manrose fans, fan kits and air movement accessories deliver elegance and innovation in reliable and durable solutions everytime.



**E6337**

Complies with AS/NZS Standards  
Specifications are subject to change without notice.

Distributed by Simx Limited

PO Box 14347, Panmure, Auckland 1741, New Zealand

p +9 259 1660 | e enquiry@manrose.co.nz | w www.manrose.co.nz

PUB1515 2310