

## BARON LED BOLLARD

**Bi-Symmetric 3000K**  
 LHT1199 - Standard  
 LHT1201 - with PIR Sensor

**Asymmetric 3000K**  
 LHT1211 - Standard  
 LHT1213 - with PIR Sensor

**Bi-Symmetric 4000K**  
 LHT1200 - Standard  
 LHT1202 - with PIR Sensor

**Asymmetric 4000K**  
 LHT1212 - Standard  
 LHT1214 - with PIR Sensor



Thank you for purchasing the Simx Lighting Baron LED Bollard.  
 It requires a 220V-240 AC power supply to operate and should be installed by a registered electrician.  
 Please read this manual before installation and retain for future reference.

### ! IMPORTANT

This product is suitable for use only with a supply voltage of 220-240V AC, 50Hz.

All electrical work must be carried out in accordance with local and national electrical codes as applicable. We strongly recommend that this light fitting is installed by a registered electrician.

Always switch power off prior to installation. A means of mains power isolation must be installed in the circuit for the purpose of safe access for any internal cleaning, recalibration, or maintenance.

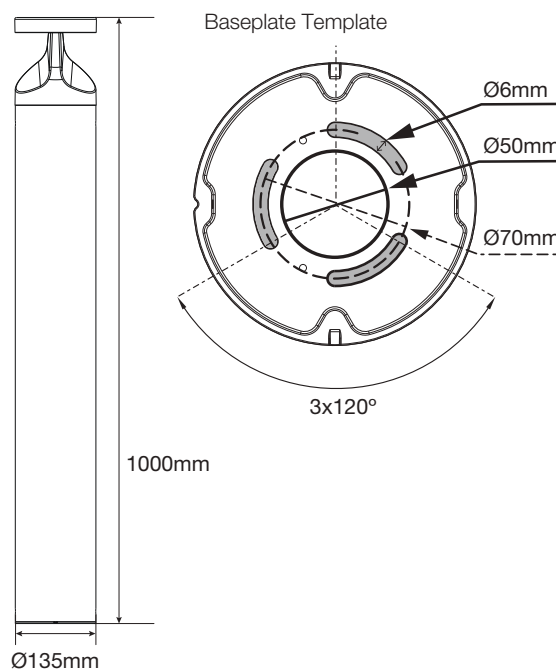
This light fitting is not intended for use by persons (including children) with reduced physical, sensory or mental capabilities, or lack of experience and knowledge, unless they have been given supervision or instruction concerning use of the appliance by a person responsible for their safety. Young children should be supervised to ensure that they do not play with the appliance.

Any changes or modifications made or attempted to this product, without the prior written approval of the manufacturer, will void any and all stated warranties.

### TECHNICAL SPECIFICATIONS

	Baron - Bi-symmetric	Baron - Asymmetric
Power Source	220-240V AC 50Hz	
Wattage	15W, 0.07A (running)	
Luminous Flux	1500 lm	1450 lm
LED Colour	3000K or 4000K	
PIR Detection Angle	Max 120deg	
PIR Detection Range	Max 3 mtrs radius	
PIR Time ON	5 sec - 8 min adjustable	
CRI	>80	
IP Rating	IP66	
IK Rating	IK10	
Safety	Class I	
Mounting	Ground Mount	
Construction	Die-cast Aluminium Body	
Net Weight	4.8 Kg	
Gross Weight	5.85 Kg	
Operating Temperature	-20°C to + 40°C	
Warranty	5 years	

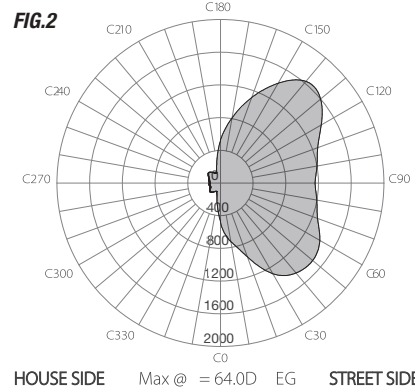
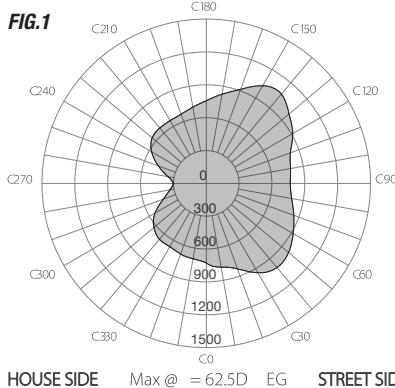
### DIMENSIONS (mm)



### DISTRIBUTION CURVE

FIG.1 - Baron Bi-Symmetric Optics

FIG.2 - Baron Asymmetric Optics



# INSTALLATION

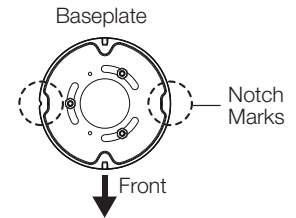
Baron Bollards can be mounted in two ways

**Option 1:** Use Simx accessory item

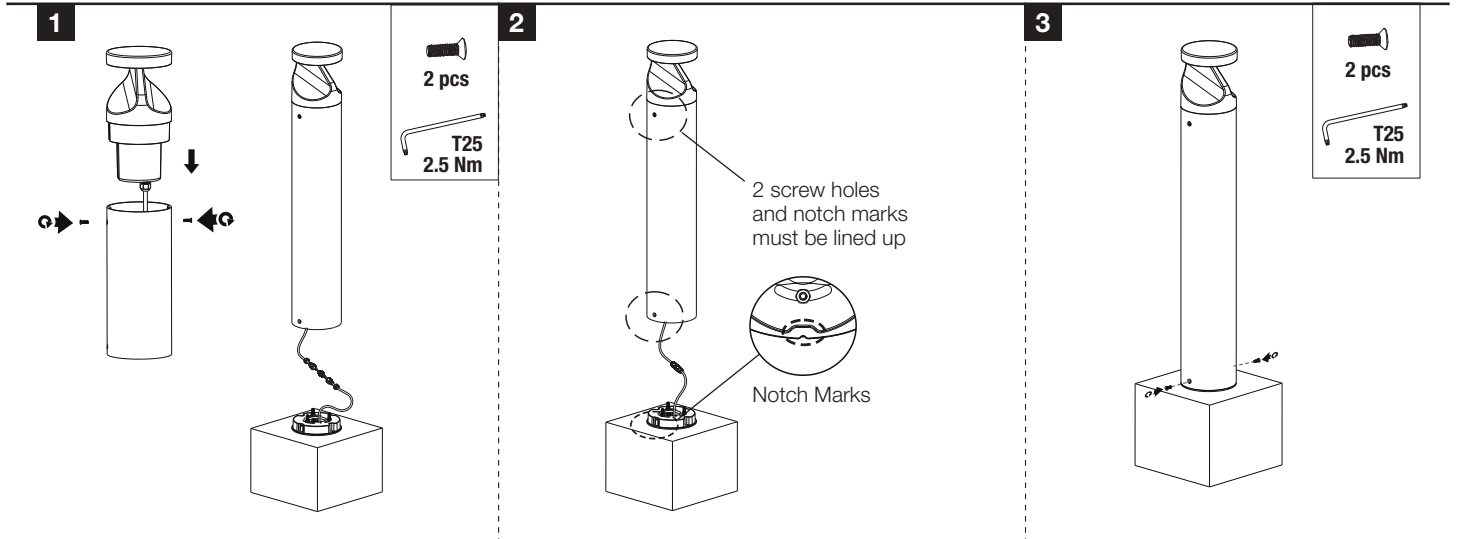
**LHT1203-BARON BOLLARD INGROUND 500MM ANCHOR**

This galvanised anchor should be set into concrete after the cable conduit is in place. The anchor topplate bolts directly to the bollard baseplate. Cabling access is through the centre of the baseplate. Separate instruction on this is supplied with the Inground Anchor.

**Option 2:** Dynabolt the bollard base plate directly onto precast concrete slab. Ensure cable conduit is in place before pouring concrete. The recommended minimum depth of concrete slab for rigidity of post under stress is 400mm.



**NOTE:** Check the orientation of bollard and ensure that the notch marks are positioned perpendicular to the direction of the light (Front)

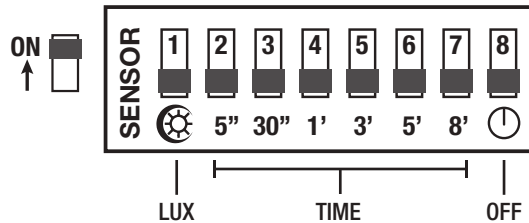
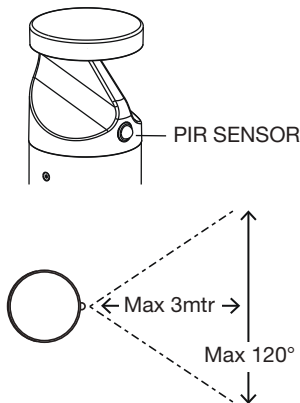


**PIR Sensor Detection Coverage**

Sensor has a factory default setting of 3 minutes ON following movement detection at night.

On site adjustments via DIP switches located under the gear housing is available. Factory default remains as night time operation with 3min duration.

Numbered 1- 8 from Left to Right. UP is ON, and DOWN is OFF



- Dipswitch 1** UP for nighttime only operation (<10Lux) , DOWN for both day and night operation.
- Dipswitch 2-7** Time setting. ON when in UP position. Optionally 5sec, 30sec, 1m, 3m, 5m, or 8m. If two time settings are UP, device only applies the lowest setting.
- Dipswitch 8** Set to OFF the sensor is operating. Set to ON the sensor is bypassed. Light then stays on permanently.

## MANUFACTURERS EXTENDED WARRANTY

This product is guaranteed by SIMX Ltd and Ventair Pty Ltd for 5 years from the date of purchase against faulty materials or workmanship which affects its designed ability to operate. During this period if the product has a defect of this nature it will be repaired or replaced free of charge by SIMX with the same item, or a similar one of higher specification.

ON CONDITION THAT:

- The buyer returns it to the seller from whom it was bought, freight paid.
- The product has been bought by the user (ie. a receipt/sales invoice is produced as proof of purchase).
- The product has not been misused or handled carelessly, installed in any way contrary to the installation instructions, or installed in any unusually exposed or harsh environmental conditions.

This guarantee excludes liability for discolouration and/or delamination of paint or plastic, or any user serviceable parts. It does not confer any rights other than those expressly set out above and does not cover any claims for consequential loss or damage.

Our Goods come with guarantees that cannot be excluded under either Australian, or New Zealand, Consumer Law.

You are entitled to a replacement or refund for a major failure and for compensation for any other reasonably foreseeable loss or damage. You are also entitled to have the Goods repaired or replaced if the Goods fail to be of acceptable quality and the failure does not amount to a major failure.



Distributed in New Zealand by Simx Ltd

Ph: +64 9 259 1660  
Technical Support Ph: +64 9 259 1662  
e: sales@simx.co.nz | www.simx.co.nz

Specifications are subject to change without notice

PUB1801 2312