

MANROSE[®]
DESIGNER SERIES

CALMA

ACOUSTIC PASSIVE VENTILATION KIT



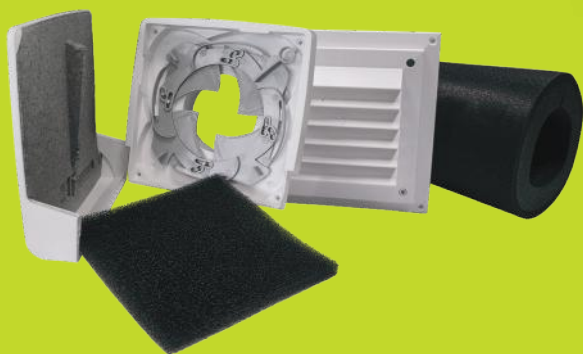
PASSIVE FRESH AIR SUPPLY



DCT0101

Fresh air delivered by proprietary Swedish acoustic damping system

- Supply air ventilator primarily for installation in bedrooms and living rooms
- Fresh make-up air drawn in by extraction fans generally in Bathrooms and Kitchens
- Ideal as part of a continuous extract ventilation system
- Made in Sweden, supported by third-party acoustic test report data*
- Adjustable opening valve with 8 opening level positions



Fresh air drawn in to refresh home by continuous slow extraction from wet-areas - either by centralised, or unitary fan systems.

The ventilator consists of an internal vent, fitted with a valve and insect filter, a noise reduction tube, as well as an outer fixed louvre grille.

*Refer to acoustic report listed under DCT0101 on simx.co.nz

Fresh air delivered by proprietary Swedish acoustic damping system

Manrose CALMA 80mm Acoustic Damping Passive Ventilation Kit

– An advanced solution offering the powerful benefits of passive fresh air supply with acoustic noise damping from the special proprietary layered foam duct and fittings. Supported by third-party acoustic test report data.

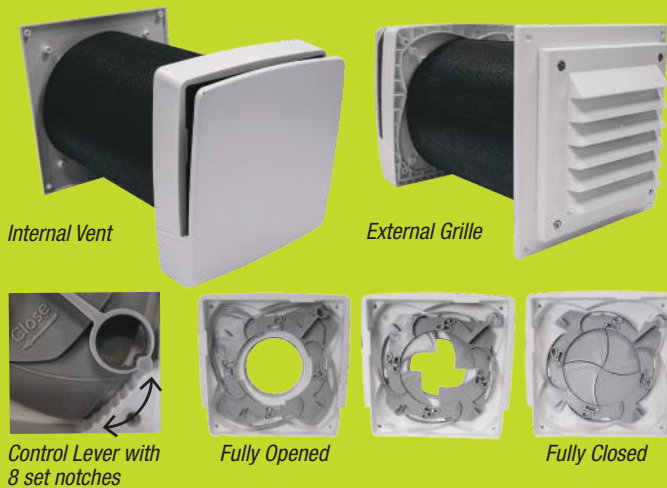
Complete with 8 position adjustable valve, operated by a concealed control arm under the cover. The valve can be quickly and easily adjusted by pulling the cover plate down from inside the room, or screw fixed in any position during installation.

The supply air ventilator is designed for installation in the bedroom and living room etc. The recommended placement is high on the wall and preferably diagonally opposite the door opening that the air will be drawn through by air extracted from bathroom, kitchen and laundry fans.

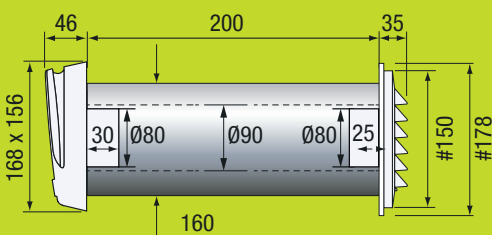
The ventilator consists of an internal inlet fitting with internal control valve and insect filter, the layered noise damping duct tube and an outer fixed louvre grille.

A basic flow of approximately 3 l/s at 10 Pa is standard in the central default flow position. The ventilator opening valve, shown below, can be adjusted to one of 8 positions or can be fixed during installation with a screw in a position between fully open and fully closed.

The noise damping foam duct can be cut to a shorter length but this will reduce its damping properties.



DIMENSIONS (mm)



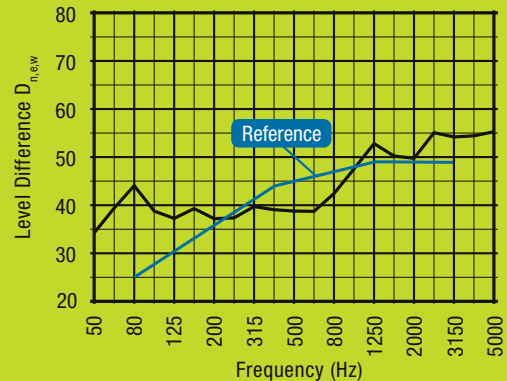
PRODUCT CODES

Calma Acoustic Passive Ventilation	DCT0101
Alternative External Typhoon Dome Cowl - order separately	DCT4572



Optional alternative **Typhoon Cowl - DCT4572** recommended for exterior walls not protected by a soffit

NOISE DATA



$D_{n,e,w}$: 45 dB

C: -1

Ctr: -3

DISTRIBUTION PATTERN

The vent can manage up to 8 l/s with no draught. Grey field = air velocity above 0.15 m/s

Temperature, cooling chamber: -16°C
 Temperature, room: 18.4°C
 Relative humidity: 40% RH
 Flow: 8 l/s
 Heating system: Not on

TEST CONDENSATION PROTECTION

Testing of Calma's condensation protection ability to prevent condensation surges:

Temperature, cooling chamber: -16°C
 Temperature, room: 18.4°C
 Relative humidity: 40% RH
 Flow: 8 l/s
 Heating system: Not on
 Time: 3 hours
 Result: No precipitation

