

**MANROSE**  
DESIGNER SERIES

**ARIA**

**SETTABLE PASSIVE VENTILATION KIT**

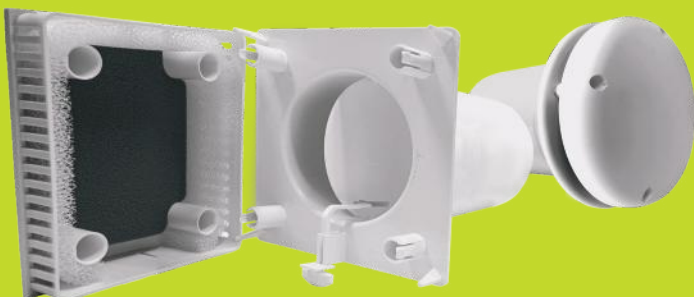
**PASSIVE FRESH AIR SUPPLY**



**DCT0102**

Passive fresh air inlet system with adjustable and minimum open area settings

- Supply air ventilator primarily for installation in bedrooms and living rooms
- Fresh make-up air drawn in by extraction fans generally in Bathrooms, Laundries and Kitchens
- Ideal as part of a continuous extract ventilation system
- Made in Sweden



Fresh air drawn in to refresh home by continuous slow extraction from wet-areas - either by centralised, or unitary fan systems.

The ventilator comprises an internal vent, fitted with a variable opening valve and insect filter, rigid wall-duct sections and outer weatherproof dome cowl.

## SETTABLE PASSIVE VENTILATION KIT

Passive fresh air inlet system with adjustable and minimum open area settings



**Manrose ARIA 90mm settable passive ventilation kit** with knock-outs for minimum closure applications.

The supply air ventilator is designed for installation in the bedroom and living room etc. The recommended placement is high on the wall and preferably diagonally opposite the door opening that the air will be drawn through by air extracted from bathroom, kitchen and laundry fans. The ventilator comprises an internal vent, fitted with a variable opening valve and insect filter, rigid wall-duct sections and outer weatherproof dome cowl.

### PRODUCT CODES

Aria Settable Passive Ventilation Kit	<b>DCT0102</b>
Replacement External Typhoon Dome Cowl - order separately	<b>DCT4572</b>

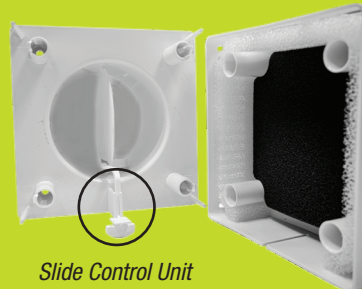
The valve is adjusted via a slide control unit located on the underside of the ventilator. The minimum open area is obtained by removing the centre knock-out rings of the valve blade. For highest effective aerodynamic opening areas, the damper blade can be easily removed completely.



Internal Vent



External Grille



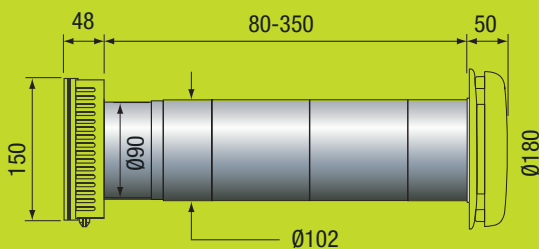
Slide Control Unit



Knock-out Rings

Exterior Moisture Control Dam

### DIMENSIONS (mm)



Slide Control Lever Under Internal Inlet Vent



Control Valve with Minimum Open Area Knock-out Rings  
Also completely removable if desired for maximum open aerodynamic area of 6,360mm<sup>2</sup>