

TORPEDO DC

Model: TORPDC100 & TORPDC150

(Mixed Flow Inline Exhaust Fan)

INSTALLATION AND WIRING INSTRUCTIONS



READ AND SAVE THESE INSTRUCTIONS

SAFETY INSTRUCTIONS - PLEASE READ BEFORE USE

WARNING: TO REDUCE THE RISK OF FIRE, ELECTRIC SHOCK OR INJURY TO PERSONS, OBSERVE THE FOLLOWING:

- Exhaust fans may adversely affect the safe operation of appliances burning gas or other fuels (including those in other rooms) due to back flow of combustion gases. These gases can potentially result in carbon monoxide poisoning. After installation of an exhaust fan such as a partition fan or a duct fan the operation of flued gas appliances should be tested by a competent person to ensure that back flow of combustion gases does not occur.
- Use this unit only in the manner intended by the manufacturer. If you have any questions contact the manufacturer.
- This appliance is not intended for use by persons (including children) with reduced physical, sensory or mental capabilities, lack of experience or knowledge, unless supervised or given instructions concerning use of the appliance by a person responsible for their safety. Children should be supervised to ensure that they do not play with the appliance.
- Before servicing or cleaning the unit, switch the power off at the service panel and lock the service disconnecting means to prevent power from being switched on accidentally. When the service disconnecting means cannot be locked; securely fasten a prominent warning device such as a tag to the service panel.
- Installation work and electrical wiring must be done by a qualified person(s) in accordance with all applicable national codes & standards including the National Build code of Location.
- If the room where the fan is to be installed already contains a stove, water heater or a gas fire, it is essential to ensure that the air supply to the room is enough for both the fan and the combustion appliance. Follow the heating equipment manufacturer's guideline and latest safety standards such as the National Construction Code.
- When cutting or drilling into wall or ceiling, do not damage electrical wiring and other hidden utilities.
- Ducted fans must always be vented to the outdoors.
- If this unit is to be installed over a tub or shower, it must be installed in accordance with the Local National Wiring Rules.
Never place a switch where it can be reached from a tub or shower.
- **WARNING:** This unit must be located and installed in accordance with the latest edition of the AS/NZS3000 wiring rules and local building codes relating to damp situations when installing in bathrooms, near sinks and water taps.
- **IMPORTANT:** A double pole disconnection switch **MUST** be included in the fixed wiring to provide isolation for maintenance.
- **CAUTION:** For general ventilation use only. **DO NOT** use to exhaust hazardous or explosive materials and vapours.
- **CAUTION:** Mount with the lowest moving parts at least 2.3m above the floor or grade level.
- **WARNING: For your safety, all electrical work, including connections and disconnections, must be performed by a licensed electrician in accordance with the Australian/New Zealand Wiring Rules (AS/NZS 3000) or the latest edition.**

INTRODUCTION

Torpedo DC Mixed Flow fans are produced under ISO 9001 quality standards, with each component thoroughly tested post-manufacturing. Before installation, please confirm the correct size and model was received, the rating label matches your electrical supply, and inspect for shipping damage. Contact your supplier immediately if damage is found. **Do not operate the unit if damaged.** This fan is designed for indoor use only, operating with air temperatures between -10°C and +50°C. Suitable for conditioned or unconditioned air.

MOULD REDUCTION TECHNOLOGY



Tired of dampness and worried about mould? This product features Ventair's advanced Mould Reduction Technology to help you maintain a dry and healthy home. Choose the ideal setting for your needs:

Standard - Powerful, On Demand Extraction provides immediate and effective removal of moisture. With the added benefit of **variable speed control**, you can adjust the fan noise and airflow to your personal needs. Alternatively, the built-in **10-minute run-on timer** continues to effectively clear lingering moisture after you've switched it off. For continuous protection and a healthier living space, the **24/7 Continuous Trickle** mode maintains a gentle, constant airflow when the main switch is off, continuously introducing fresh air to remove stale, damp air.

MODE SELECTION & SPEED CONTROL

MODE SWITCH



Standard

Simply turn on or off as required.



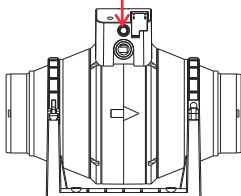
24/7 Continuous Trickle Extraction

Creates a healthier living environment by encouraging constant air change.

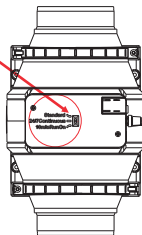


10 minute Run On Timer

Continues to operate for 10 minutes after switching off.



** See page 6 for wiring instructions*



TYPICAL APPLICATIONS

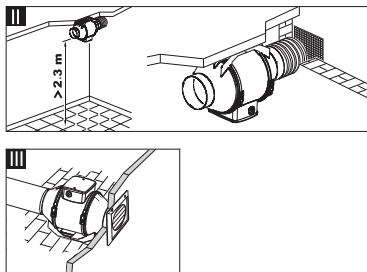
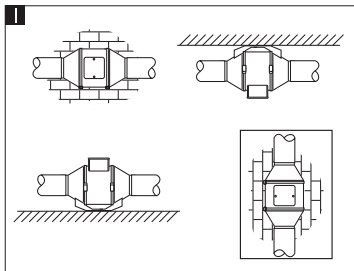
This exhaust fan offers versatile installation, accommodating both horizontal and vertical orientations, and is designed for a wide range of applications.

Typical installations are illustrated in Figure 1.

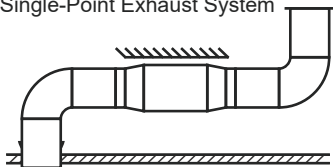
Before installing the product check the following points: **(1)** The fan impeller turns freely and **(2)** there are no obstructions to the airflow.

Each model features a robust mounting bracket, designed for quick and easy installation. To ensure a secure and airtight connection, attach any ductwork using duct tape or duct fastening clamps, both available at your local hardware store.

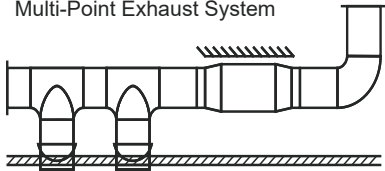
Figure 1.



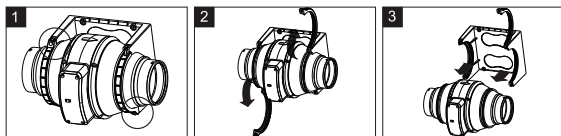
Single-Point Exhaust System



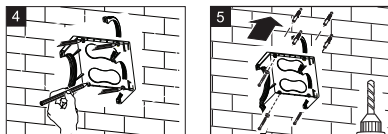
Multi-Point Exhaust System



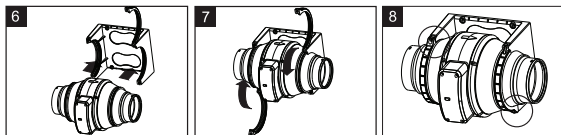
INSTALLATION AND ASSEMBLY: To start the installation, the motor assembly must first be removed from the mounting bracket. Loosen the two retaining clips around the motor and remove **(steps 1-3 below)**.



2. Secure the mounting bracket to a fixed structure (steps 4 & 5 below).



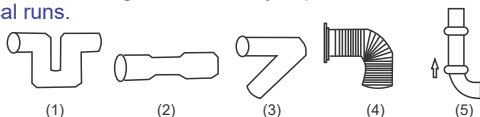
3. Place fan motor in the bracket & securely fasten retaining clips.



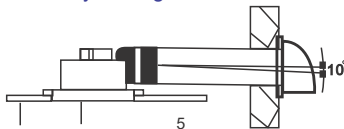
NOTE: Please pay attention to the Air Direction when mounting the fan assembly.

4. Complete electrical connection as per instructions on page 6.

Avoid the below configurations: To ensure maximum possible airflow & performance, flexible ducting should be fully expanded with no unnecessary bends or vertical runs.

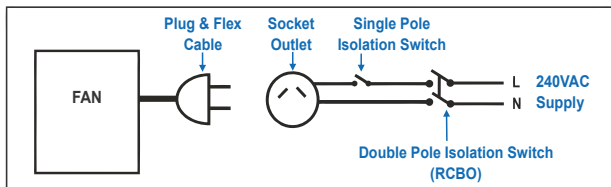


NOTE: When installing the fan in a bathroom, ensure the duct declines downwards at approximately 10 degrees to aid with condensation removal.



ELECTRICAL WIRING

Wiring for Standard Operation



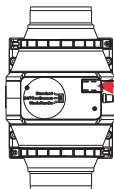
Wiring for Mould Reduction Features (10 min Run On or 24/7 Continuous)



Qualified Electrician required for activation of additional "Mould Reduction" features.

Toggle switch should be set prior to connecting power supply.

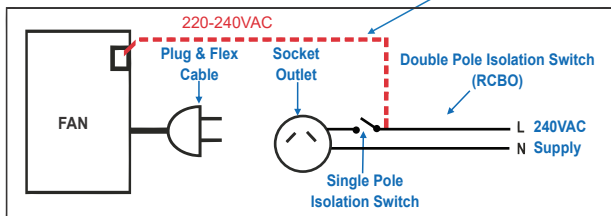
Connect a **220-240VAC** supply into the 'additional features' terminal block to enable the toggle switch (mould reduction) functions.



ADDITIONAL FEATURES WIRING TERMINAL



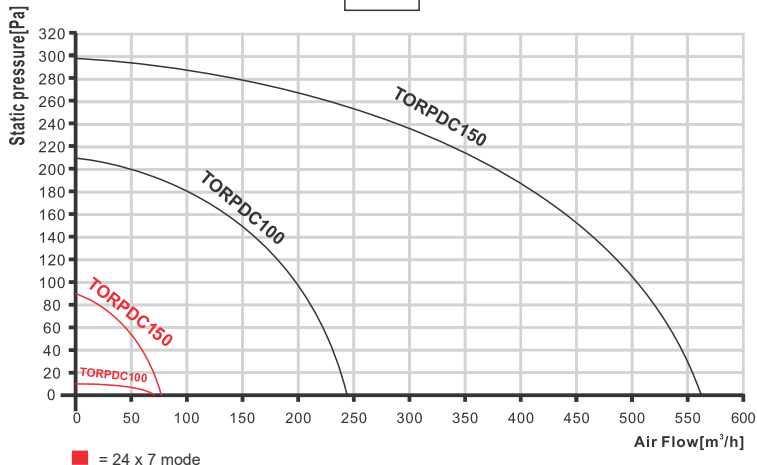
NOTE: A concealed single pole isolation switch can be added for intermittent decommissioning of the '24/7 continuous' and '10 min Run On' features if required.



SPECIFICATIONS

Model No:	TORPDC100	TORPDC150
Rated Voltage	220 - 240VAC 50Hz	220 - 240VAC 50Hz
Power Consumption	10 - 28W	2.4 - 40W
Noise (dB) @3m	29 - 37dB(A)	24 - 47dB(A)
Duct Size	100mm Diameter	150mm Diameter
Air Delivery	68 - 240m ³ /h	65 - 561m ³ /h
Minimum Install Depth	238mm	265mm
Electrical Classification	Class II	Class II
IP Rating	IPX4	IPX4
Indoor / Outdoor Suitability	For Indoor use only	For Indoor use only
Variable Speed Control	Yes	Yes
Climate Classification	Tropical	Tropical

Class II (double insulated) electrical appliance

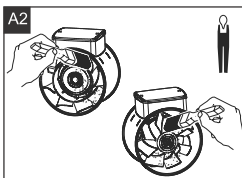
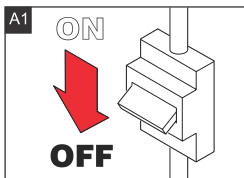


MAINTENANCE

IMPORTANT: BEFORE CARRYING OUT ANY MAINTENANCE OR SERVICING, ENSURE THE UNIT IS DISCONNECTED FROM THE MAIN ELECTRICAL SUPPLY.

This exhaust fan incorporates fully sealed bearings and therefore does not require any lubrication. We recommend inspection of the product at least once every twelve (12) months to avoid the excessive accumulation of dust and dirt on the impeller.

To inspect the unit, disconnect from electrical supply and ducting. If any debris is evident on the impeller clean with a damp (not wet) cloth. **DO NOT USE** any detergents or abrasive materials for cleaning.



WARRANTY PERIOD: 3 year replacement warranty.

In-home (labour): N/A

Lodging a Warranty Claim: All warranty claims are lodged online by visiting <https://ventair.com.au/warranty/>

Warranty terms and conditions apply. Refer to the enclosed warranty card for additional information.