

ELSA-2 DL 225 OP 110° 1800 830 PD IR PS DALI WH

Item number E010299681
GTIN 4015120299681



Technical data

GENERAL	
Device category	Downlight
Product information	Do not cover the downlight directly with insulating material.
User interface	IR remote control, DALI-Bus
Remote controllable	✓
Conformity	CE, EAC, RoHS, WEEE
Warranty	5 years

ATTACHMENT	
Installation type	Recessed mounting
Installation position	Ceiling
Installation dimension	Installation depth: 70 mm, Ø 225 mm
Type of connection	Push terminal
Connectable wire cross section	0.5 - 2.5 mm ²
Number of contacts	5

HOUSING	
Dimensions	Height 60 mm, Ø 240 mm
Weight	1310 g
Material	powder-coated aluminium
Protection type	IP20
Permissible ambient temperature	-20 °C...+40 °C
Relative humidity	5 - 93 %, non-condensing
Colour	white, similar to RAL 9003
Glow wire test in accordance with IEC 60695-2-10	650 °C

ELECTRICAL VERSION	
Control system	DALI
Protection class	I

DALI	220 - 240 V ~/~	LED 3000 K	CRI 80	Phi 1750 lm	92 lm/W	UGR ≤ 25
IP20		Ø 6 m				

Product description

- LED downlight, 3000K with opal cover (diffuser), 18W, for ceiling mounting without additional accessories
- High light quality and system performance
- Operating device DALI, included
- Integrated FLAT MINI DALI presence detector with 360°
- field of detection
- Range of up to 6 m in diameter at a recommended installation height of 2.5 m (maximum installation height 3 m) for use in small rooms and passageways with no or little natural lighting
- Integrated DALI power supply for fitting a DALI bus (broadcast) with additional lights
- Control HVAC or ON/OFF lights as a potential-free contact in conjunction with the DALI switch from ESYLUX

Offers special product features like:

- Integrated presence detector with DALI bus voltage supply

Nominal voltage	220 - 240 V AC/DC / 50 - 60 Hz
Stand-by consumption	< 0.5 W

LIGHT	
Diffuser	opal
Light emission	direct
Beam angle	110 °
Unified Glare Rating	≤ 25
Flicker factor	0 %
Rated output P	19 W
Luminous flux - min	1750 lm
Luminous flux - max	1750 lm
Luminous efficacy - min	92 lm/w
Luminous efficacy - max	92 lm/w
Colour temperature	3000 K
Colour rendering index Ra	> 80
Colour tolerance	2 SDCM
Color Quality Scale	>80
L70B10 lifetime at 25 °C	60000 h
Life time L70B50 at 25 °C	60000 h
Life time L80B10 at 25 °C	40000 h
Life time L80B50 at 25 °C *	40000 h
Life time L90B10 at 25 °C	20000 h
Life time L90B50 at 25 °C	20000 h
Photobiological safety	RG0

SENSORS	
Detection angle	360°
Detection range diagonally	Ø 6 m

ELSA-2 DL 225 OP 110° 1800 830 PD IR PS DALI WH

Item number	GTIN
EO10299681	4015120299681

Detection range head-on	Ø 3 m
Detection range presence	Ø 2.5 m
Field of detection	28 m ²
Range adjustment	mechanically with included cut to size lens mask
Recommended installation height	2.5 m
Max. mounting height	3 m
Light measurement	mixed light
Level of brightness	100 – 1000 lx

CHANNELS (LIGHTING / HVAC)

Number of light channels	1
Push button input HVAC	-
Channel	C1 Lighting
Function	Switching, Dimming
Switch contact	Bus system
Push button input	-

Impulse mode	-
Switch-off delay time	60 s...240 min (adjustable in steps)
Orientation light	10 – 40 % luminous efficiency
Switch-off delay time, orientation light	60 s...240 min
Channel	C3 with accessory (ACTUATOR FULL AUTO C3 DALI)
Function	Switching
Switching capacity	10 A (12 V DC / 230 V AC)
Switch contact	make contact / floating
Push button input	✓
Switch-off delay time	60 s...120 min (adjustable in steps)
Channel	C4 with accessory (ACTUATOR SEMI AUTO C4 DALI)
Function	Switching
Switching capacity	10 A (12 V DC / 230 V AC)
Switch contact	make contact / floating
Push button input	✓
Switch-off delay time	60 s...120 min (adjustable in steps)

Factory settings

GENERAL

Sensitivity	100 %
Orientation light ON	✓
Orientation light, depending on brightness	✓
Switching threshold for orientation light	500 lx
Luminous efficiency switch-on value	10 %

CHANNELS (LIGHTING / HVAC)

Channel	C1 Lighting
Operating mode	fully automatic
Level of brightness/switching threshold	500 lx
Switch-off delay time	5 min
Luminous efficiency of orientation light	10 %
Duration of switch-off warning	300 s

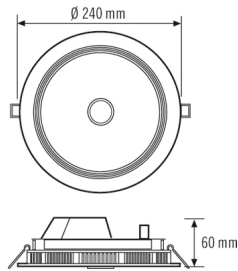
Accessories

Product designation	Item number	Product description	GTIN
Adapter			
ELSA-2 RING 225	EO10300264	Adapter ring 225–265 mm for ELSA-2 series	4015120300264
Electrical accessories			
JUNCTION BOX 5-POLE BK	EO10430992	Universal junction box, black, 5-pin, 2.5 mm ²	4015120430992
ACTUATOR FULL AUTO C3 DALI	EP10427473	Modul for the conversion of bus commands from the DALI presence detector and other light controls into switching signals (fully automatic)	4015120427473
ACTUATOR SEMI AUTO C4 DALI	EP10427480	Modul for the conversion of bus commands from the DALI presence detector and other light controls into switching signals (semi-automatic)	4015120427480
Mounting			
ELSA-2 MOUNTING FRAME 225 SM WH	EO10300899	Ceiling installation frame for ELSA-2 225 series	4015120300899
Remote control			
ESY-Pen	EP10425356	ESY-Pen and ESY-App, two tools for every task: (1) Parameterisation, (2) remote control, (3) light measurement, (4) project management	4015120425356
REMOTE CONTROL PDi DALI	EP10425899	IR remote control for DALI presence detectors and motion detectors	4015120425899

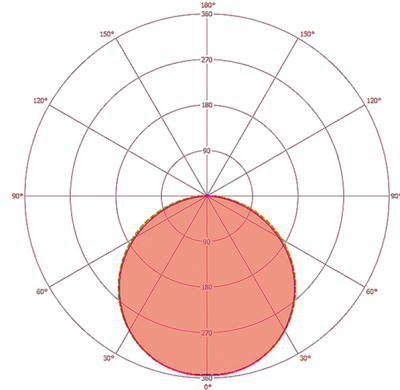
ELSA-2 DL 225 OP 110° 1800 830 PD IR PS DALI WH

Item number **GTIN**
 EO10299681 4015120299681

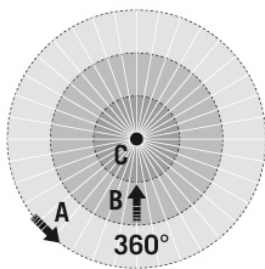
Dimension drawing



Lichtverteilung



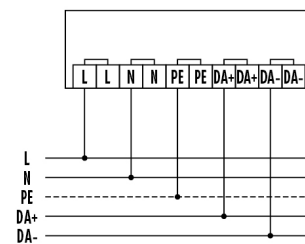
Field of detections



Detection range

■ Diagonally (A)	Ø 6 m
■ Frontal (B)	Ø 3 m
■ Presence area (C)	Ø 2.5 m

Circuit diagram



Standard operation.

Detailed product description

- LED downlight, 18 W for ceiling mounting
- Recessed luminaire with opal cover (diffuser)
- High-quality housing, aluminium lamp body, white powder-coated (RAL 9003)
- Can be used for ceiling mounting without additional accessories
- Colour temperature: 3000 K with the lowest colour tolerances
- Luminous flux: 1750 lm
- Rated life time L80B50 at 25 °C: 40000 h
- Operating device: on/off (included)
- Integrated FLAT MINI DALI presence detector with 360°
- field of detection
- Range of up to 6 m in diameter at a recommended installation height of 2.5 m
- Automatic light control of DALI electronic ballasts to achieve a constant brightness level, depending on presence and natural light (with DALI-output)
- Default settings ensure immediate operability
- Simple programming using remote control. Detector can be used as a fully automatic or semi-automatic device
- Lowering of the luminous efficiency after expiration of the time setting for use as an orientation light for hallways and passageways
- Integrated DALI power supply for fitting a DALI bus (broadcast) with additional lights
- Control HVAC or ON/OFF lights as a potential-free contact in conjunction with the DALI switch from ESYLUX