

DATA SHEET

ESYLUX

SVENJA CL 900 DDP OP 7000 8TW IP20 DALI-2 DT8

Item number

EO10850677

GTIN

4015120850677

| | | | | | | |
|---|----------------------|----------------------|-----------|----------------|----------|------|
| DALI-2 | 220 - 240 V AC/DC | LED Tunable white | CRI 84 | Phi 7000 lm | 116 lm/W | IP20 |
|  | | | | | | |

Product description

- Round, flat surface-mounted LED luminaire with powder-coated aluminium housing
- Opal diffuser with micro-prismatic surface made from impact-resistant polycarbonate
- Tunable white (2700 - 6500 K) for Human Centric Lighting with DALI-2 light control (DT8)
- SwitchDIM function for dimming and adjusting the colour temperature
- Optional accessories: Can be suspended from the ceiling using the adjustable wire pendulum set (2 m) or pole pendulum set (1 m)



Technical data

GENERAL

| | |
|------------------------------|---|
| Device category | Ceiling light |
| Included in delivery | 1x drilling template, 3x screws, 3x plugs, 3x screw studs |
| Conformity | CE, WEEE, RoHS, EAC |
| Test symbol | ENEC 25 |
| Product-specific information | Meets DALI-2 standard |
| Warranty | 5 years |

ATTACHMENT

| | |
|--------------------------------|---------------------------|
| Installation type | Surface mounting |
| Installation position | Ceiling |
| Connectable wire cross section | 1.5 - 2.5 mm ² |
| Number of contacts | 5 |

HOUSING

| | |
|--|------------------------------|
| Dimensions | Height/Depth 87 mm, Ø 900 mm |
| Weight | 11200 g |
| Material | Aluminium |
| Protection type | IP20 |
| Permissible ambient temperature | 0 °C...+45 °C |
| Impact resistance | IK08 |
| Colour | white, similar to RAL 9003 |
| Glow wire test in accordance with IEC 60695-2-10 | 850 °C |

ELECTRICAL VERSION

| | |
|------------------|--------|
| Control system | DALI-2 |
| Protection class | I |

| | |
|----------------------|--------------------------------|
| Nominal voltage | 220 - 240 V AC/DC / 50 - 60 Hz |
| In-rush current | 11.4 A / 190 µs |
| Power consumption | 60 W |
| Power consumption | 1500 mA |
| Stand-by consumption | < 0.5 W |

LIGHT

| | |
|---------------------------|-------------------------------|
| Diffuser | opal |
| Glare suppression | DDP (micro-prismatic) |
| Light emission | direct/indirect |
| Beam angle | 86 ° |
| Unified Glare Rating | <19 |
| Flicker factor | 0.27 |
| Rated output P | 60 W |
| Luminous flux | 7000 lm |
| Luminous efficacy | 116 lm/W |
| Colour temperature | 2700 - 6500 K (Tunable White) |
| Colour rendering index Ra | > 80 |
| Colour tolerance | 3 SDCM |
| Color Quality Scale | >80 |
| L70B10 lifetime at 25 °C | 93000 h |
| Life time L70B50 at 25 °C | 96000 h |
| Life time L80B10 at 25 °C | 58000 h |
| Life time L80B50 at 25 °C | 59000 h |
| Life time L90B10 at 25 °C | 26000 h |
| Life time L90B50 at 25 °C | 27000 h |
| Photobiological safety | RG0 |

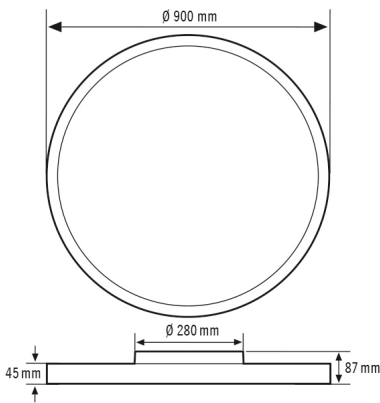
SVENJA CL 900 DDP OP 7000 8TW IP20 DALI-2 DT8

| | |
|-------------|---------------|
| Item number | GTIN |
| EO10850677 | 4015120850677 |

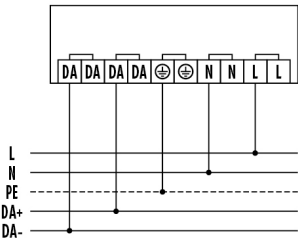
Accessories

| Product designation | Item number | Product description | GTIN |
|-------------------------------|-------------|--|---------------|
| Electrical accessories | | | |
| POWER SUPPLY 200mA DALI | EC10430008 | 200mA power pack for supplying power to DALI operating units or DALI control modules that do not have their own power supply | 4015120430008 |
| Mounting | | | |
| SVENJA POLE PENDULUM SET 1000 | EO10850561 | Pendulum set with centrally mounted tube, transparent 5-pole connection cable and round ceiling canopy | 4015120850561 |
| SVENJA WIRE PENDULUM SET 2000 | EO10850578 | Pendulum kit with 3 wire cables, transparent 5-pole connection cable and round ceiling canopy | 4015120850578 |
| Push button | | | |
| PUSH BUTTON x8 TW | EO10431388 | DALI Broadcast 8 x push button Tunable White for manual override of luminaires with DALI-2 DT8 drivers | 4015120431388 |

Dimension drawing

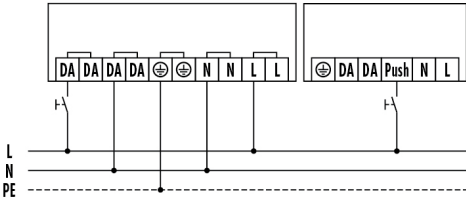


Circuit diagram



Standard operation DALI/DALI-2.

Circuit diagram



Standard operation with optional SwitchDIM (PushDIM) function.

Detailed product description

SVENJA CL 900 DDP OP 7000 8TW IP20 DALI-2 DT8

| Item number | GTIN |
|-------------|---------------|
| EO10850677 | 4015120850677 |

- Round, flat LED surface-mounted light with powder coated aluminium housing
- Opal diffuser with micro-prismatic texture made of impact-resistant polycarbonate
- Tunable White (2700 – 6500 K) for human centric lighting with DALI-2 light control (DT8)
- SwitchDIM function for dimming and adjusting the colour temperature
- Optional accessories: Pendulum with adjustable cable pendulum kit (2 m) or tube pendulum kit (1 m)
- Perfect for applications with high light quality requirements and glare suppression to EN 12464-1
- Ideal for use in social areas such as foyers, assembly halls, break areas and canteens
- Indirect light proportion of 35% makes lights appear to float on the ceiling and make rooms look larger
- Homogeneous, dazzle-free illumination and long LED lifetime through installation as large area backlight configuration of the LEDs and coordinated lenses
- Easy to install through two-piece design with snap lock plug and electrical connector