

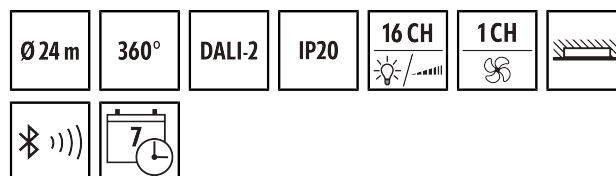
PD-C 360bt/24 APC20 PS plus DALI-2

Item number

EP10428111

GTIN

4015120428111



Product description

- DALI-2-certified ceiling-mounted presence detector with integrated DALI-2 control unit and power supply (250 mA)
- Multi-room light control of up to 16 groups
- Simple adaptation to individual and complex room situations
- Presence and daylight dependent constant light control for optimum energy efficiency
- 16-A relay for switching HVAC and supplementary lighting
- Four push button inputs (non-floating)
- Various manual override options and up to 16 scenes
- Automatic switching of groups if room usage changes
- Day- and time-dependent control options per group
- Energy-saving and time-controlled switching off of DALI operating devices (Power-Cut-Off)
- Swarm function for extra comfort in the workplace
- Central functions for area- or building-wide override
- Quick start using factory settings in broadcast mode
- Individual groups immediately ready for use using factory settings
- Easy configuration using the ESY-App via bidirectional Bluetooth interface
- Easy documentation and management of configured projects using the ESY-App (e.g. as a PDF report)
- Surface mounting with accessories

Offers special product features like:

- Cross-room and individual control of up to 16 groups and 16 scenes
- Presence and daylight dependent constant light control
- Weekday and time-dependent control of functions
- Simple parameterisation, remote control and documentation with ESY-App

Technical data

GENERAL

Device category	Ceiling-mounted presence detector
Product information	Mounting position: Keep a safe distance of 5 m from radio antennas (e.g. WiFi access points).
Included in delivery	includes lens mask
User interface	Bluetooth, DALI-Bus
Remote controllable	✓
Conformity	CE, EAC, RoHS, WEEE
Warranty	5 years

ATTACHMENT

Installation type	Recessed mounting
Installation position	Ceiling
Installation dimension	Installation depth: 80 mm, Ø 68 mm
Type of connection	Push terminal
Connectable wire cross section	1.5 – 2.5 mm ²

HOUSING

Dimensions	Height/Depth 126 mm, Ø 108 mm
Weight	244 g

Material	UV-stabilised polycarbonate
Protection type	IP20
Protection type with accessory	IP54 with surface-mounted box (order separately)
Permissible ambient temperature	-25 °C...+50 °C
Relative humidity	5 – 93 %, non-condensing
Colour	white, similar to RAL 9010

ELECTRICAL VERSION

Control system	DALI-2
Protection class	I
Nominal voltage	230 V ~ / 50 – 60 Hz
Output voltage	16 V DC
In-rush current	20 A / 110 µs
Output current	250 mA
Leakage current	250 mA
No load current DALI	2 mA
Peak current DALI	2 mA
Power consumption	5 W
Stand-by consumption	< 0.4 W

PD-C 360bt/24 APC20 PS plus DALI-2

Item number	GTIN
EP10428111	4015120428111

Bluetooth LE transmission power	8 dBm
---------------------------------	-------

SENSORS

Detection angle	360°
Detection range diagonally	Ø 24 m
Detection range head-on	Ø 11 m
Detection range presence	Ø 8 m
Field of detection	up to 453 m ²
Range adjustment	mechanically with included cut to size lens mask
Recommended installation height	3 m
Max. mounting height	10 m
Light measurement	mixed light
Level of brightness	5 – 2000 lx
Frequency range	2.4 GHz

CHANNELS (LIGHTING / HVAC)

Number of HVAC-channels	1
Number of light groups	16
Push button input lighting	4

Slave input	-
Mode	Semi-automatic, Fully automatic
Constant light control	✓
Integrated timer	✓
Sensitivity configurable	✓
DALI-2 device type	Control device in accordance with -103, Operating device -208 (switch actuator), Input device in accordance with -301 (button), Input device in accordance with -302 (switch, absolute values), Input device in accordance with -303 (presence and motion detectors), Input device in accordance with -304 (light sensor)
Channel	C1-C16, HVAC Lighting
Function	Regulate, Control, Dimming, Switching
Switching capacity	230 V/50 Hz 2300 W/10 A (cos phi = 1) 1150 VA/5 A (cos phi = 0,5) 600 W LED
Switch contact	make contact / floating
Push button input	✓
Impulse mode	-

Factory settings**GENERAL**

Sensitivity	100 %
Afterglow luminous efficiency	30 %
Afterglow duration	5 min
Orientation light ON	-
Orientation light, depending on brightness	✓
Switching threshold for orientation light	10 lx
Deviation (%)	0 %
Luminous efficiency switch-on value	50 %
Colour temperature switch-on value	4000 K

Scene on/off	-
Scene colour temperature	4000 K
Luminous efficiency of scene	100 %

CHANNELS (LIGHTING / HVAC)

Channel	C1 Lighting
Operating mode	fully automatic
Level of brightness/switching threshold	500 lx
Switch-off delay time	5 min
Luminous efficiency of orientation light	10 %

Accessories

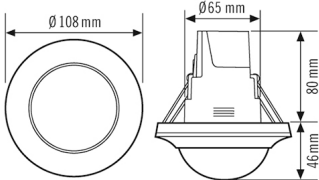
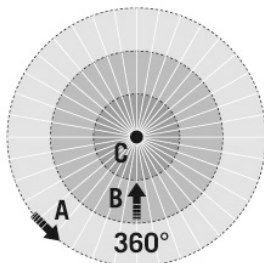
Product designation	Item number	Product description	GTIN
Actuator			
ACTUATOR 1x 8A DALI-2	EP10427398	DALI-2 ACTUATOR with integrated relay contact for DALI-2 commands in accordance with IEC 62386-208 (DALI device type 7, DT7)	4015120427398
Ceiling-mounted presence detector			
PD-C 360/32 BMS DALI-2	EP10424885	DALI-2-certified ceiling-mounted presence detector for use as an input device for DALI-2 lighting systems	4015120424885
PD-C 360/8 BMS DALI-2	EP10428203	DALI-2-certified ceiling-mounted presence detector for use as an input device for DALI-2 lighting systems	4015120428203
PD-C 360/24 BMS DALI-2	EP10428210	DALI-2-certified ceiling-mounted presence detector for use as an input device for DALI-2 lighting systems	4015120428210

PD-C 360bt/24 APC20 PS plus DALI-2

Item number	GTIN
EP10428111	4015120428111

Accessories

Product designation	Item number	Product description	GTIN
Cover			
COMPACT COVER SET 24/32 SR	EP10425431	Cover set for COMPACT series, 24 m/32 m, consists of cover and design ring, silver	4015120425431
COMPACT COVER SET 24/32 BK	EP00007491	Cover set for COMPACT series, 24 m/32 m, consists of cover and design ring, black	4015120007491
Mounting			
COMPACT APC MOUNTING BOX IP20 SM WH	EP10426278	Surface-mounted box IP20 for COMPACT APC DALI-2	4015120426278
COMPACT APC MOUNTING BOX IP54 SM GY	EP10427183	Surface-mounted box IP54 for COMPACT APC DALI-2	4015120427183
COMPACT APC MOUNTING BOX IP20 SM BK	EP10426285	Surface-mounted box IP20 for COMPACT APC DALI-2	4015120426285
COMPACT APC MOUNTING BOX IP54 SM BK	EP10427190	Surface-mounted box IP54 for COMPACT APC DALI-2	4015120427190
Protection			
BASKET GUARD ROUND LARGE	EM10425608	Basket guard for presence and motion detectors and smoke detectors, Ø 180 mm, height 90 mm	4015120425608
Push button			
PUSH BUTTON x8 DALI-2 WH	EP10431630	8-way button for DALI-2	4015120431630
PUSH BUTTON x6 DALI-2 WH	EP10431623	6-way button for DALI-2	4015120431623
PUSH BUTTON x4 DALI-2 WH	EP10431616	4-way button for DALI-2	4015120431616
PUSH BUTTON x2 DALI-2 WH	EP10431609	2-way button for DALI-2	4015120431609
Repeater			
REPEATER PS IEC 62386	EP10431371	Universal signal amplifier (repeater) with integrated bus voltage supply (150 mA) for extending the DALI cable length.	4015120431371

Dimension drawing	Field of detections	Detection range	
		<div>Diagonally (A)</div>	Ø 24 m
		<div>Frontal (B)</div>	Ø 11 m
		<div>Presence area (C)</div>	Ø 8 m

PD-C 360bt/24 APC20 PS plus DALI-2

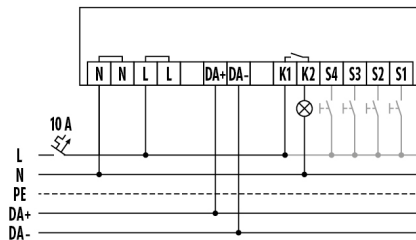
Item number

EP10428111

GTIN

4015120428111

Circuit diagram



Standard operation with optional control via a closing button.

Detailed product description

- DALI-2-certified ceiling-mounted presence detector with integrated DALI-2 control unit and power supply (250 mA)
- Multi-room light control of up to 16 groups
- Simple adaptation to individual and complex room situations
- Presence and daylight dependent constant light control for optimum energy efficiency
- 16-A relay for switching HVAC and supplementary lighting
- Four push button inputs (non-floating)
- Various manual override options and up to 16 scenes
- Automatic switching of groups if room usage changes
- Day- and time-dependent control options per group
- Energy-saving and time-controlled switching off of DALI operating devices (Power-Cut-Off)
- Swarm function for extra comfort in the workplace
- Central functions for area- or building-wide override
- Quick start using factory settings in broadcast mode
- Individual groups immediately ready for use using factory settings
- Easy configuration using the ESY-App via bidirectional Bluetooth interface
- Easy documentation and management of configured projects using the ESY-App (e.g. as a PDF report)
- Surface mounting with accessories